

Datasheet for ABIN1534918  
**anti-GPRIN1 antibody (AA 231-280)**



[Go to Product page](#)

1 Image

## Overview

Quantity:	100 µL
Target:	GPRIN1
Binding Specificity:	AA 231-280
Reactivity:	Human
Host:	Rabbit
Clonality:	Polyclonal
Conjugate:	This GPRIN1 antibody is un-conjugated
Application:	Western Blotting (WB), ELISA

## Product Details

Immunogen:	The antiserum was produced against synthesized peptide derived from human GPRIN1.
Isotype:	IgG
Specificity:	GPRIN1 Antibody detects endogenous levels of total GPRIN1 protein.
Purification:	The antibody was purified from rabbit antiserum by affinity-chromatography using immunogen.
Purity:	> 95 %

## Target Details

Target:	GPRIN1
Alternative Name:	GPRIN1 ( <a href="#">GPRIN1 Products</a> )
Background:	Synonyms: G protein-regulated inducer of neurite outgrowth 1, GRIN1

### Target Details

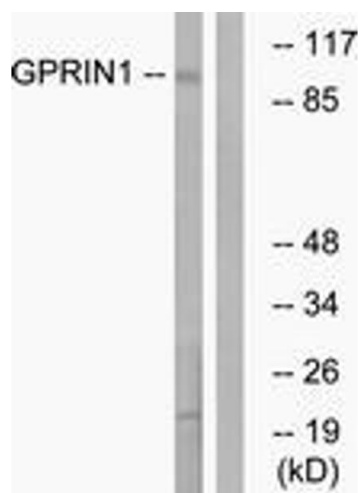
	NCBI Gene Symbol: GRIN1
Molecular Weight:	102 kDa
Gene ID:	114787
OMIM:	611239
UniProt:	<a href="#">Q7Z2K8</a>

### Application Details

Application Notes:	WB: 1:500~1:1000 ELISA: 1:40000
Comment:	Unigene-Number: Hs.150549 (NCBI Gene Symbol: GRIN1)
Restrictions:	For Research Use only

### Handling

Format:	Liquid
Concentration:	1 mg/mL
Buffer:	phosphate buffered saline (without Mg <sup>2+</sup> and Ca <sup>2+</sup> ), pH 7.4, 150 mM NaCl, 0.02 % sodium azide and 50 % glycerol.
Preservative:	Sodium azide
Precaution of Use:	This product contains sodium azide: a POISONOUS AND HAZARDOUS SUBSTANCE which should be handled by trained staff only.
Storage:	-20 °C
Storage Comment:	Stable at -20°C for at least 1 year.
Expiry Date:	12 months



Western Blotting

**Image 1.** Western blot analysis of extracts from HT-29 cells, using GPRIN1 Antibody. The lane on the right is treated with the synthesized peptide.