

Datasheet for ABIN1534928

anti-TUBGCP5 antibody (AA 741-790)[Go to Product page](#)**1** Image

Overview

Quantity:	100 µL
Target:	TUBGCP5
Binding Specificity:	AA 741-790
Reactivity:	Human, Mouse, Rat
Host:	Rabbit
Clonality:	Polyclonal
Conjugate:	This TUBGCP5 antibody is un-conjugated
Application:	Western Blotting (WB), ELISA

Product Details

Immunogen:	The antiserum was produced against synthesized peptide derived from human TUBGCP5.
Isotype:	IgG
Specificity:	TUBGCP5 Antibody detects endogenous levels of total TUBGCP5 protein.
Purification:	The antibody was purified from rabbit antiserum by affinity-chromatography using immunogen.
Purity:	> 95 %

Target Details

Target:	TUBGCP5
Alternative Name:	TUBGCP5 (TUBGCP5 Products)
Background:	Synonyms: Gamma-tubulin complex component 5, GCP-5

Target Details

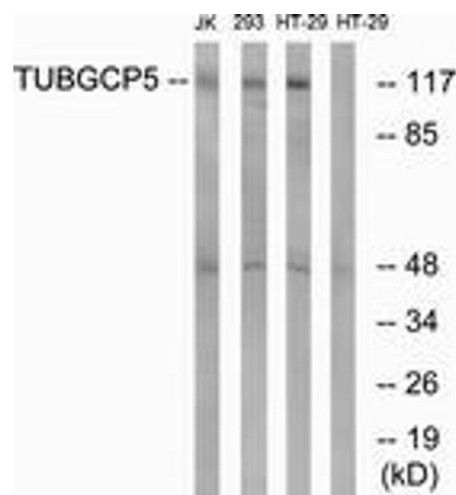
	NCBI Gene Symbol: GCP5
Molecular Weight:	118 kDa
Gene ID:	114791
OMIM:	608147
UniProt:	Q96RT8
Pathways:	M Phase

Application Details

Application Notes:	WB: 1:500~1:1000 ELISA: 1:20000
Comment:	Unigene-Number: Hs.533898 (NCBI Gene Symbol: GCP5)
Restrictions:	For Research Use only

Handling

Format:	Liquid
Concentration:	1 mg/mL
Buffer:	phosphate buffered saline (without Mg2+ and Ca2+), pH 7.4, 150 mM NaCl, 0.02 % sodium azide and 50 % glycerol.
Preservative:	Sodium azide
Precaution of Use:	This product contains sodium azide: a POISONOUS AND HAZARDOUS SUBSTANCE which should be handled by trained staff only.
Storage:	-20 °C
Storage Comment:	Stable at -20°C for at least 1 year.
Expiry Date:	12 months



Western Blotting

Image 1. Western blot analysis of extracts from HT-29/Jurkat/293 cells, using TUBGCP5 Antibody. The lane on the right is treated with the synthesized peptide.