



[Go to Product page](#)

Datasheet for ABIN1534929
anti-GCP6 antibody (AA 741-790)

2 Images

Overview

| | |
|----------------------|--|
| Quantity: | 100 µg |
| Target: | GCP6 (TUBGCP6) |
| Binding Specificity: | AA 741-790 |
| Reactivity: | Human |
| Host: | Rabbit |
| Clonality: | Polyclonal |
| Conjugate: | This GCP6 antibody is un-conjugated |
| Application: | Western Blotting (WB), ELISA, Immunohistochemistry (IHC) |

Product Details

| | |
|---------------|---|
| Immunogen: | The antiserum was produced against synthesized peptide derived from human TUBGCP6. |
| Isotype: | IgG |
| Specificity: | TUBGCP6 Antibody detects endogenous levels of total TUBGCP6 protein. |
| Purification: | The antibody was purified from rabbit antiserum by affinity-chromatography using immunogen. |
| Purity: | > 95 % |

Target Details

| | |
|-------------------|--|
| Target: | GCP6 (TUBGCP6) |
| Alternative Name: | TUBGCP6 (TUBGCP6 Products) |
| Background: | Synonyms: Gamma-tubulin complex component 6, GCP-6 |

Target Details

NCBI Gene Symbol: GCP6

Molecular Weight: 200 kDa

Gene ID: 85378

OMIM: 610053

UniProt: [Q96RT7](#)

Pathways: [M Phase](#)

Application Details

Application Notes: WB: 1:500~1:1000 IHC: 1:50~1:100 ELISA: 1:20000

Comment: Unigene-Number: Hs.336431 (NCBI Gene Symbol: GCP6)

Restrictions: For Research Use only

Handling

Format: Liquid

Concentration: 1 mg/mL

Buffer: phosphate buffered saline (without Mg²⁺ and Ca²⁺), pH 7.4, 150 mM NaCl, 0.02 % sodium azide and 50 % glycerol.

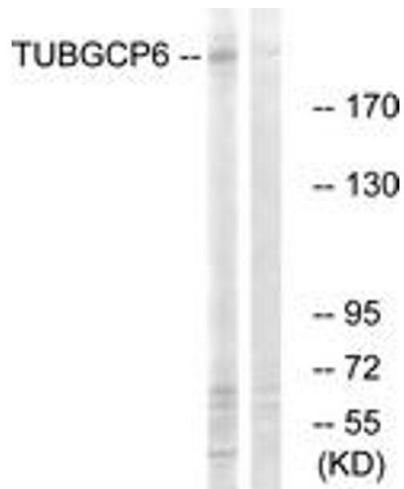
Preservative: Sodium azide

Precaution of Use: This product contains sodium azide: a POISONOUS AND HAZARDOUS SUBSTANCE which should be handled by trained staff only.

Storage: -20 °C

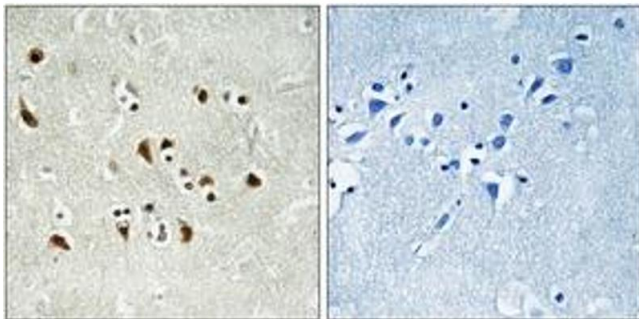
Storage Comment: Stable at -20°C for at least 1 year.

Expiry Date: 12 months



Western Blotting

Image 1. Western blot analysis of extracts from COLO cells, using TUBGCP6 Antibody. The lane on the right is treated with the synthesized peptide.



Immunohistochemistry

Image 2. Immunohistochemistry analysis of paraffin-embedded human brain tissue, using TUBGCP6 Antibody. The picture on the right is treated with the synthesized peptide.