

Datasheet for ABIN1534933
anti-GJB7 antibody (AA 21-70)[Go to Product page](#)

1 Image

Overview

Quantity:	100 µg
Target:	GJB7 (GJb7)
Binding Specificity:	AA 21-70
Reactivity:	Human
Host:	Rabbit
Clonality:	Polyclonal
Conjugate:	This GJB7 antibody is un-conjugated
Application:	ELISA, Western Blotting (WB)

Product Details

Immunogen:	The antiserum was produced against synthesized peptide derived from human GJB7.
Isotype:	IgG
Specificity:	GJB7 Antibody detects endogenous levels of total GJB7 protein.
Purification:	The antibody was purified from rabbit antiserum by affinity-chromatography using immunogen.
Purity:	> 95 %

Target Details

Target:	GJB7 (GJb7)
Alternative Name:	GJB7 (GJb7 Products)
Background:	Synonyms: Gap junction beta-7 protein, Connexin-25, Cx25,

Target Details

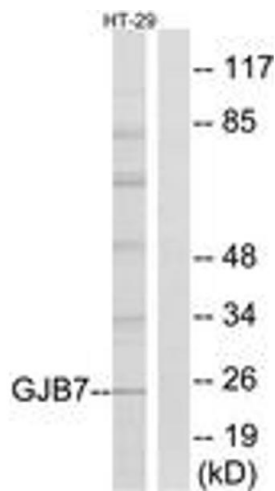
	NCBI Gene Symbol: CXB7
Molecular Weight:	25 kDa
Gene ID:	375519
OMIM:	611921
UniProt:	Q6PEY0

Application Details

Application Notes:	WB: 1:500~1:1000 ELISA: 1:10000
Comment:	Unigene-Number: Hs.146727 (NCBI Gene Symbol: CXB7)
Restrictions:	For Research Use only

Handling

Format:	Liquid
Concentration:	1 mg/mL
Buffer:	phosphate buffered saline (without Mg ²⁺ and Ca ²⁺), pH 7.4, 150 mM NaCl, 0.02 % sodium azide and 50 % glycerol.
Preservative:	Sodium azide
Precaution of Use:	This product contains sodium azide: a POISONOUS AND HAZARDOUS SUBSTANCE which should be handled by trained staff only.
Storage:	-20 °C
Storage Comment:	Stable at -20°C for at least 1 year.
Expiry Date:	12 months



Western Blotting

Image 1. Western blot analysis of extracts from HT-29 cells, using GJB7 Antibody. The lane on the right is treated with the synthesized peptide.