

Datasheet for ABIN1534940
anti-GRIN2D antibody (AA 671-720)[Go to Product page](#)

1 Image

Overview

Quantity:	100 µg
Target:	GRIN2D
Binding Specificity:	AA 671-720
Reactivity:	Human, Mouse, Rat
Host:	Rabbit
Clonality:	Polyclonal
Conjugate:	This GRIN2D antibody is un-conjugated
Application:	ELISA, Western Blotting (WB)

Product Details

Immunogen:	The antiserum was produced against synthesized peptide derived from human GRIN2D.
Isotype:	IgG
Specificity:	GRIN2D Antibody detects endogenous levels of total GRIN2D protein.
Purification:	The antibody was purified from rabbit antiserum by affinity-chromatography using immunogen.
Purity:	> 95 %

Target Details

Target:	GRIN2D
Alternative Name:	GRIN2D (GRIN2D Products)
Background:	Synonyms: EB11, estrogen receptor binding CpG island, glutamate [NMDA] receptor epsilon 4,

Target Details

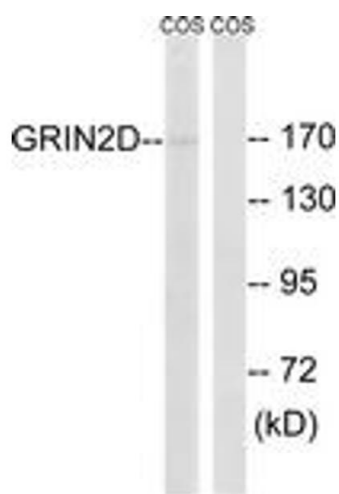
	glutamate receptor, ionotropic, N-methyl D-aspartate 2D, GRIN2D, N-methyl D-aspartate receptor 2D, NMDE4, NR2D NCBI Gene Symbol: NMDE4
Molecular Weight:	143 kDa
Gene ID:	2906
OMIM:	602717
UniProt:	O15399
Pathways:	Synaptic Membrane

Application Details

Application Notes:	WB: 1:500~1:1000 ELISA: 1:40000
Comment:	Unigene-Number: Hs.445015 (NCBI Gene Symbol: NMDE4)
Restrictions:	For Research Use only

Handling

Format:	Liquid
Concentration:	1 mg/mL
Buffer:	phosphate buffered saline (without Mg ²⁺ and Ca ²⁺), pH 7.4, 150 mM NaCl, 0.02 % sodium azide and 50 % glycerol.
Preservative:	Sodium azide
Precaution of Use:	This product contains sodium azide: a POISONOUS AND HAZARDOUS SUBSTANCE which should be handled by trained staff only.
Storage:	-20 °C
Storage Comment:	Stable at -20°C for at least 1 year.
Expiry Date:	12 months



Western Blotting

Image 1. Western blot analysis of extracts from COS7 cells, using GRIN2D Antibody. The lane on the right is treated with the synthesized peptide.