

Datasheet for ABIN1534945
anti-GRAP2 antibody (AA 121-170)



[Go to Product page](#)

1 Image

Overview

Quantity:	100 µL
Target:	GRAP2
Binding Specificity:	AA 121-170
Reactivity:	Human
Host:	Rabbit
Clonality:	Polyclonal
Conjugate:	This GRAP2 antibody is un-conjugated
Application:	Western Blotting (WB), ELISA

Product Details

Immunogen:	The antiserum was produced against synthesized peptide derived from human GRAP2.
Isotype:	IgG
Specificity:	GRAP2 Antibody detects endogenous levels of total GRAP2 protein.
Purification:	The antibody was purified from rabbit antiserum by affinity-chromatography using immunogen.
Purity:	> 95 %

Target Details

Target:	GRAP2
Alternative Name:	GRAP2 (GRAP2 Products)
Background:	Synonyms: GRB2-related adapter protein 2,GADS protein, Growth factor receptor-binding

Target Details

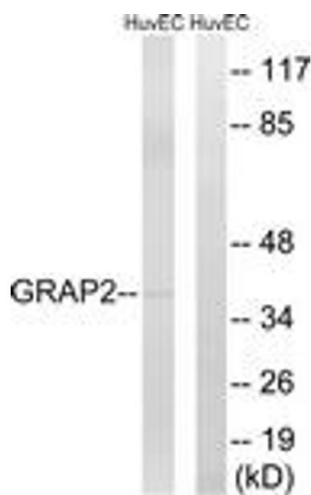
	protein, GRBLG, Grf40 adapter protein, Grf-40, GRB-2-like protein, GRB2L, GRBX, P38, Hematopoietic cell-associated adapter protein GrpL, Adapter protein GRID, SH3-SH2-SH3 adapter NCBI Gene Symbol: GRAP2
Molecular Weight:	37 kDa
Gene ID:	9402
OMIM:	604518
UniProt:	O75791
Pathways:	TCR Signaling , Fc-epsilon Receptor Signaling Pathway

Application Details

Application Notes:	WB: 1:500~1:1000 ELISA: 1:40000
Comment:	Unigene-Number: Hs.517499 (NCBI Gene Symbol: GRAP2)
Restrictions:	For Research Use only

Handling

Format:	Liquid
Concentration:	1 mg/mL
Buffer:	phosphate buffered saline (without Mg2+ and Ca2+), pH 7.4, 150 mM NaCl, 0.02 % sodium azide and 50 % glycerol.
Preservative:	Sodium azide
Precaution of Use:	This product contains sodium azide: a POISONOUS AND HAZARDOUS SUBSTANCE which should be handled by trained staff only.
Storage:	-20 °C
Storage Comment:	Stable at -20°C for at least 1 year.
Expiry Date:	12 months



Western Blotting

Image 1. Western blot analysis of extracts from HuvEc cells, using GRAP2 Antibody. The lane on the right is treated with the synthesized peptide.