

Datasheet for ABIN1534948
anti-GRB14 antibody (AA 81-130)



[Go to Product page](#)

1 Image

Overview

Quantity:	100 µL
Target:	GRB14
Binding Specificity:	AA 81-130
Reactivity:	Human, Mouse, Rat
Host:	Rabbit
Clonality:	Polyclonal
Conjugate:	This GRB14 antibody is un-conjugated
Application:	ELISA, Western Blotting (WB)

Product Details

Immunogen:	The antiserum was produced against synthesized peptide derived from human GRB14.
Isotype:	IgG
Specificity:	GRB14 Antibody detects endogenous levels of total GRB14 protein.
Purification:	The antibody was purified from rabbit antiserum by affinity-chromatography using immunogen.
Purity:	> 95 %

Target Details

Target:	GRB14
Alternative Name:	GRB14 (GRB14 Products)
Background:	Synonyms: Growth factor receptor-bound protein 14, GRB14 adapter protein,

Target Details

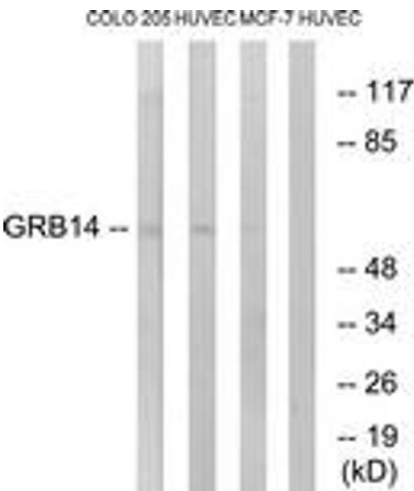
	NCBI Gene Symbol: GRB14
Molecular Weight:	60 kDa
Gene ID:	2888
OMIM:	601524
UniProt:	Q14449

Application Details

Application Notes:	WB: 1:500~1:1000 ELISA: 1:40000
Comment:	Unigene-Number: Hs.411881 (NCBI Gene Symbol: GRB14)
Restrictions:	For Research Use only

Handling

Format:	Liquid
Concentration:	1 mg/mL
Buffer:	phosphate buffered saline (without Mg ²⁺ and Ca ²⁺), pH 7.4, 150 mM NaCl, 0.02 % sodium azide and 50 % glycerol.
Preservative:	Sodium azide
Precaution of Use:	This product contains sodium azide: a POISONOUS AND HAZARDOUS SUBSTANCE which should be handled by trained staff only.
Storage:	-20 °C
Storage Comment:	Stable at -20°C for at least 1 year.
Expiry Date:	12 months



Western Blotting

Image 1. Western blot analysis of extracts from HuvEc/COLO/MCF-7 cells, using GRB14 Antibody. The lane on the right is treated with the synthesized peptide.