

Datasheet for ABIN1534952  
**anti-GIDRP88 antibody (AA 721-770)**



[Go to Product page](#)

2 Images

## Overview

Quantity:	100 µL
Target:	GIDRP88 (C10orf28)
Binding Specificity:	AA 721-770
Reactivity:	Human, Mouse
Host:	Rabbit
Clonality:	Polyclonal
Conjugate:	This GIDRP88 antibody is un-conjugated
Application:	Western Blotting (WB), Immunohistochemistry (IHC), ELISA

## Product Details

Immunogen:	The antiserum was produced against synthesized peptide derived from human GIDRP88.
Isotype:	IgG
Specificity:	GIDRP88 Antibody detects endogenous levels of total GIDRP88 protein.
Purification:	The antibody was purified from rabbit antiserum by affinity-chromatography using immunogen.
Purity:	> 95 %

## Target Details

Target:	GIDRP88 (C10orf28)
Alternative Name:	GIDRP88 ( <a href="#">C10orf28 Products</a> )
Background:	Synonyms: Growth inhibition and differentiation-related protein 88, Putative mitochondrial

## Target Details

---

space protein 32.1,  
NCBI Gene Symbol: GIDRP

Molecular Weight: 87 kDa

Gene ID: 27291

UniProt: [Q7Z5L2](#)

## Application Details

---

Application Notes: WB: 1:500~1:1000 IHC: 1:50~1:100 ELISA: 1:40000

Comment: Unigene-Number: Hs.419800 (NCBI Gene Symbol: GIDRP)

Restrictions: For Research Use only

## Handling

---

Format: Liquid

Concentration: 1 mg/mL

Buffer: phosphate buffered saline (without Mg<sup>2+</sup> and Ca<sup>2+</sup>), pH 7.4, 150 mM NaCl, 0.02 % sodium azide and 50 % glycerol.

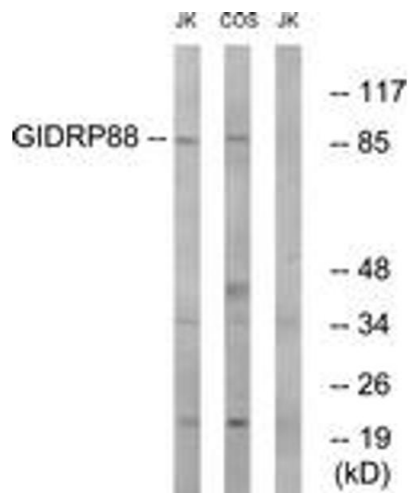
Preservative: Sodium azide

Precaution of Use: This product contains sodium azide: a POISONOUS AND HAZARDOUS SUBSTANCE which should be handled by trained staff only.

Storage: -20 °C

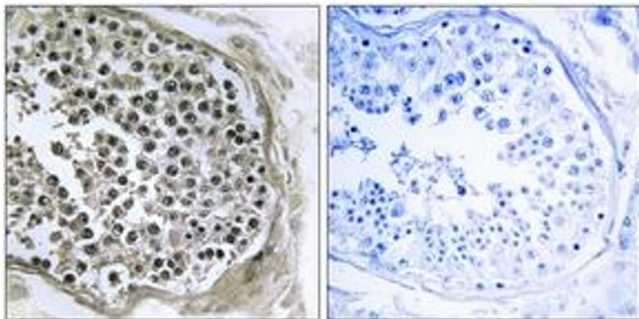
Storage Comment: Stable at -20°C for at least 1 year.

Expiry Date: 12 months



### Western Blotting

**Image 1.** Western blot analysis of extracts from Jurkat/COS cells, using GIDRP88 Antibody. The lane on the right is treated with the synthesized peptide.



### Immunohistochemistry

**Image 2.** Immunohistochemistry analysis of paraffin-embedded human testis tissue, using GIDRP88 Antibody. The picture on the right is treated with the synthesized peptide.