



[Go to Product page](#)

Datasheet for ABIN1534957  
**anti-ERAS antibody (AA 184-233)**

2 Images

Overview

Quantity:	100 µL
Target:	ERAS
Binding Specificity:	AA 184-233
Reactivity:	Human
Host:	Rabbit
Clonality:	Polyclonal
Conjugate:	This ERAS antibody is un-conjugated
Application:	Western Blotting (WB), ELISA, Immunofluorescence (IF)

Product Details

Immunogen:	The antiserum was produced against synthesized peptide derived from human ERAS.
Isotype:	IgG
Specificity:	ERAS Antibody detects endogenous levels of total ERAS protein.
Purification:	The antibody was purified from rabbit antiserum by affinity-chromatography using immunogen.
Purity:	> 95 %

Target Details

Target:	ERAS
Alternative Name:	ERAS ( <a href="#">ERAS Products</a> )
Background:	Synonyms: GTPase Eras, E-Ras, Embryonic stem cell-expressed Ras,

## Target Details

---

NCBI Gene Symbol: RASE

Molecular Weight: 25 kDa

Gene ID: 3266

OMIM: 300437

UniProt: [Q7Z444](#)

## Application Details

---

Application Notes: WB: 1:500~1:1000 IF: 1:100~1:500 ELISA: 1:20000

Comment: Unigene-Number: Hs.447330 (NCBI Gene Symbol: RASE)

Restrictions: For Research Use only

## Handling

---

Format: Liquid

Concentration: 1 mg/mL

Buffer: phosphate buffered saline (without Mg<sup>2+</sup> and Ca<sup>2+</sup>), pH 7.4, 150 mM NaCl, 0.02 % sodium azide and 50 % glycerol.

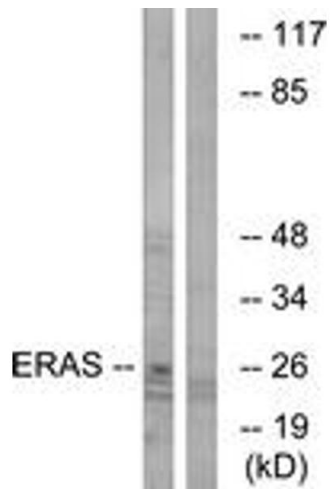
Preservative: Sodium azide

Precaution of Use: This product contains sodium azide: a POISONOUS AND HAZARDOUS SUBSTANCE which should be handled by trained staff only.

Storage: -20 °C

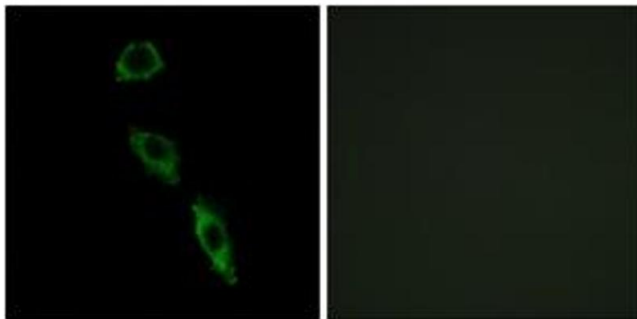
Storage Comment: Stable at -20°C for at least 1 year.

Expiry Date: 12 months



### Western Blotting

**Image 1.** Western blot analysis of extracts from Jurkat cells, using ERAS Antibody. The lane on the right is treated with the synthesized peptide.



### Immunofluorescence

**Image 2.** Immunofluorescence analysis of A549 cells, using ERAS Antibody. The picture on the right is treated with the synthesized peptide.