

Datasheet for ABIN1534959

**anti-GIMAP4 antibody (AA 131-180)**[Go to Product page](#)**1** Image

## Overview

Quantity:	100 µL
Target:	GIMAP4
Binding Specificity:	AA 131-180
Reactivity:	Human
Host:	Rabbit
Clonality:	Polyclonal
Conjugate:	This GIMAP4 antibody is un-conjugated
Application:	Western Blotting (WB), ELISA

## Product Details

Immunogen:	The antiserum was produced against synthesized peptide derived from human GIMAP4.
Isotype:	IgG
Specificity:	GIMAP4 Antibody detects endogenous levels of total GIMAP4 protein.
Purification:	The antibody was purified from rabbit antiserum by affinity-chromatography using immunogen.
Purity:	> 95 %

## Target Details

Target:	GIMAP4
Alternative Name:	GIMAP4 ( <a href="#">GIMAP4 Products</a> )
Background:	Synonyms: GTPase IMAP family member 4, Immunity-associated protein 4, Immunity-

Target Details

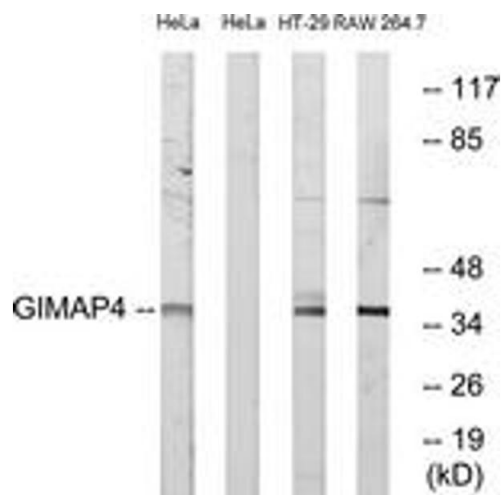
	associated nucleotide 1 protein, hIAN1, NCBI Gene Symbol: GIMA4
Molecular Weight:	37 kDa
Gene ID:	55303
OMIM:	608087
UniProt:	<a href="#">Q9NUV9</a>

Application Details

Application Notes:	WB: 1:500~1:1000 ELISA: 1:5000
Comment:	Unigene-Number: Hs.647101, Hs.648582 (NCBI Gene Symbol: GIMA4)
Restrictions:	For Research Use only

Handling

Format:	Liquid
Concentration:	1 mg/mL
Buffer:	phosphate buffered saline (without Mg2+ and Ca2+), pH 7.4, 150 mM NaCl, 0.02 % sodium azide and 50 % glycerol.
Preservative:	Sodium azide
Precaution of Use:	This product contains sodium azide: a POISONOUS AND HAZARDOUS SUBSTANCE which should be handled by trained staff only.
Storage:	-20 °C
Storage Comment:	Stable at -20°C for at least 1 year.
Expiry Date:	12 months



Western Blotting

**Image 1.** Western blot analysis of extracts from HeLa/HT-29/RAW264.7 cells, using GIMAP4 Antibody. The lane on the right is treated with the synthesized peptide.