

Datasheet for ABIN1534960
anti-GIMAP5 antibody (AA 231-280)[Go to Product page](#)

2 Images

Overview

Quantity:	100 µg
Target:	GIMAP5
Binding Specificity:	AA 231-280
Reactivity:	Human
Host:	Rabbit
Clonality:	Polyclonal
Conjugate:	This GIMAP5 antibody is un-conjugated
Application:	Western Blotting (WB), ELISA, Immunohistochemistry (IHC)

Product Details

Immunogen:	The antiserum was produced against synthesized peptide derived from human GIMAP5.
Isotype:	IgG
Specificity:	GIMAP5 Antibody detects endogenous levels of total GIMAP5 protein.
Purification:	The antibody was purified from rabbit antiserum by affinity-chromatography using immunogen.
Purity:	> 95 %

Target Details

Target:	GIMAP5
Alternative Name:	GIMAP5 (GIMAP5 Products)
Background:	Synonyms: GTPase IMAP family member 5, Immunity-associated nucleotide 4-like 1 protein,

Target Details

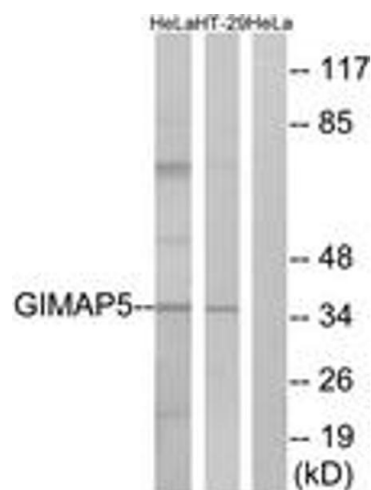
	Immunity-associated protein 3, IAN-5, NCBI Gene Symbol: GIMA5
Molecular Weight:	34 kDa
Gene ID:	55340
OMIM:	608086
UniProt:	Q96F15
Pathways:	Regulation of Leukocyte Mediated Immunity , Positive Regulation of Immune Effector Process , Production of Molecular Mediator of Immune Response

Application Details

Application Notes:	WB: 1:500~1:1000 IHC: 1:50~1:100 ELISA: 1:20000
Comment:	Unigene-Number: Hs.647079 (NCBI Gene Symbol: GIMA5)
Restrictions:	For Research Use only

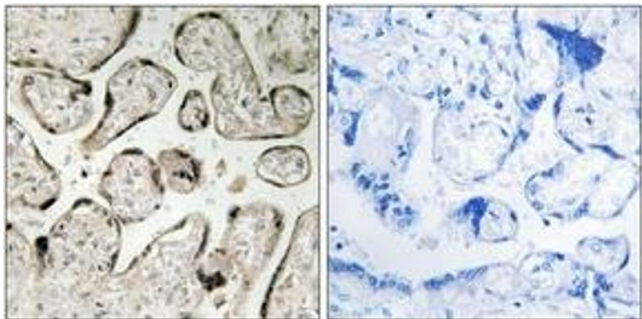
Handling

Format:	Liquid
Concentration:	1 mg/mL
Buffer:	phosphate buffered saline (without Mg ²⁺ and Ca ²⁺), pH 7.4, 150 mM NaCl, 0.02 % sodium azide and 50 % glycerol.
Preservative:	Sodium azide
Precaution of Use:	This product contains sodium azide: a POISONOUS AND HAZARDOUS SUBSTANCE which should be handled by trained staff only.
Storage:	-20 °C
Storage Comment:	Stable at -20°C for at least 1 year.
Expiry Date:	12 months



Western Blotting

Image 1. Western blot analysis of extracts from HeLa/HT-29 cells, using GIMAP5 Antibody. The lane on the right is treated with the synthesized peptide.



Immunohistochemistry

Image 2. Immunohistochemistry analysis of paraffin-embedded human placenta tissue, using GIMAP5 Antibody. The picture on the right is treated with the synthesized peptide.