



Datasheet for ABIN1534966  
**anti-SAR1B antibody (AA 111-160)**



[Go to Product page](#)

2 Images

Overview

Quantity:	100 µg
Target:	SAR1B
Binding Specificity:	AA 111-160
Reactivity:	Human, Mouse, Rat
Host:	Rabbit
Clonality:	Polyclonal
Conjugate:	This SAR1B antibody is un-conjugated
Application:	Western Blotting (WB), ELISA, Immunohistochemistry (IHC)

Product Details

Immunogen:	The antiserum was produced against synthesized peptide derived from human SAR1B.
Isotype:	IgG
Specificity:	SAR1B Antibody detects endogenous levels of total SAR1B protein.
Purification:	The antibody was purified from rabbit antiserum by affinity-chromatography using immunogen.
Purity:	> 95 %

Target Details

Target:	SAR1B
Alternative Name:	SAR1B ( <a href="#">SAR1B Products</a> )
Background:	Synonyms: GTP-binding protein SAR1b, GTBPB

## Target Details

---

NCBI Gene Symbol: SAR1B

Molecular Weight: 22 kDa

Gene ID: 51128

OMIM: 607690

UniProt: [Q9Y6B6](#)

Pathways: [Lipid Metabolism](#)

## Application Details

---

Application Notes: WB: 1:500~1:1000 IHC: 1:50~1:100 ELISA: 1:20000

Comment: Unigene-Number: Hs.432984 (NCBI Gene Symbol: SAR1B)

Restrictions: For Research Use only

## Handling

---

Format: Liquid

Concentration: 1 mg/mL

Buffer: phosphate buffered saline (without Mg<sup>2+</sup> and Ca<sup>2+</sup>), pH 7.4, 150 mM NaCl, 0.02 % sodium azide and 50 % glycerol.

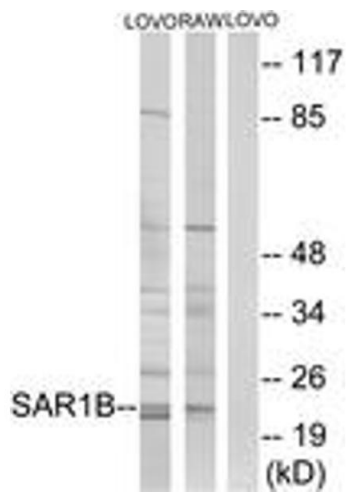
Preservative: Sodium azide

Precaution of Use: This product contains sodium azide: a POISONOUS AND HAZARDOUS SUBSTANCE which should be handled by trained staff only.

Storage: -20 °C

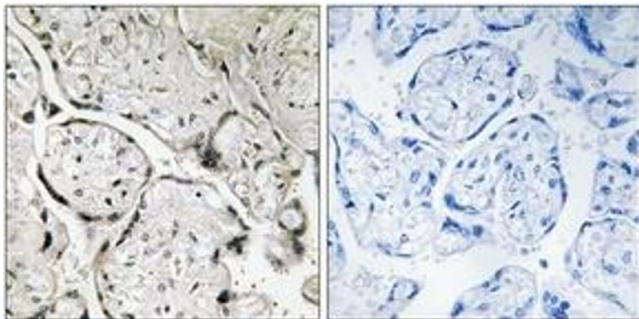
Storage Comment: Stable at -20°C for at least 1 year.

Expiry Date: 12 months



### Western Blotting

**Image 1.** Western blot analysis of extracts from LOVO/RAW264.7 cells, using SAR1B Antibody. The lane on the right is treated with the synthesized peptide.



### Immunohistochemistry

**Image 2.** Immunohistochemistry analysis of paraffin-embedded human placenta tissue, using SAR1B Antibody. The picture on the right is treated with the synthesized peptide.