

Datasheet for ABIN1534978
anti-AGFG2 antibody (AA 91-140)[Go to Product page](#)

1 Image

Overview

Quantity:	100 µg
Target:	AGFG2
Binding Specificity:	AA 91-140
Reactivity:	Human, Mouse
Host:	Rabbit
Clonality:	Polyclonal
Conjugate:	This AGFG2 antibody is un-conjugated
Application:	Western Blotting (WB), ELISA

Product Details

Immunogen:	The antiserum was produced against synthesized peptide derived from human AGFG2.
Isotype:	IgG
Specificity:	AGFG2 Antibody detects endogenous levels of total AGFG2 protein.
Purification:	The antibody was purified from rabbit antiserum by affinity-chromatography using immunogen.
Purity:	> 95 %

Target Details

Target:	AGFG2
Alternative Name:	AGFG2 (AGFG2 Products)
Background:	Synonyms: Arf-GAP domain and FG repeats-containing protein 2, HIV-1 Rev-binding protein-like

Target Details

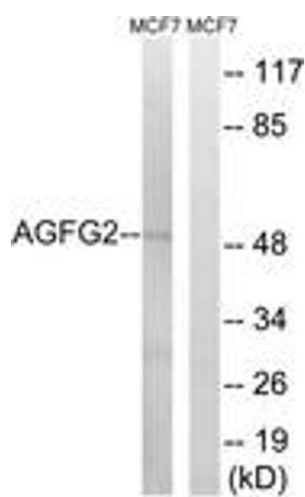
	protein, Rev/Rex activation domain-binding protein related, RAB-R, HRBL, RABR NCBI Gene Symbol: HRBL
Molecular Weight:	48 kDa
Gene ID:	3268
OMIM:	604019
UniProt:	O95081

Application Details

Application Notes:	WB: 1:500~1:1000 ELISA: 1:40000
Comment:	Unigene-Number: Hs.521083 (NCBI Gene Symbol: HRBL)
Restrictions:	For Research Use only

Handling

Format:	Liquid
Concentration:	1 mg/mL
Buffer:	phosphate buffered saline (without Mg ²⁺ and Ca ²⁺), pH 7.4, 150 mM NaCl, 0.02 % sodium azide and 50 % glycerol.
Preservative:	Sodium azide
Precaution of Use:	This product contains sodium azide: a POISONOUS AND HAZARDOUS SUBSTANCE which should be handled by trained staff only.
Storage:	-20 °C
Storage Comment:	Stable at -20°C for at least 1 year.
Expiry Date:	12 months



Western Blotting

Image 1. Western blot analysis of extracts from MCF-7 cells, using AGFG2 Antibody. The lane on the right is treated with the synthesized peptide.