



[Go to Product page](#)

Datasheet for ABIN1534979
anti-HLA-H antibody (AA 71-120)

1 Image

Overview

Quantity:	100 µg
Target:	HLA-H
Binding Specificity:	AA 71-120
Reactivity:	Human
Host:	Rabbit
Clonality:	Polyclonal
Conjugate:	This HLA-H antibody is un-conjugated
Application:	Western Blotting (WB), ELISA

Product Details

Immunogen:	The antiserum was produced against synthesized peptide derived from human HLAH.
Isotype:	IgG
Specificity:	HLAH Antibody detects endogenous levels of total HLAH protein.
Purification:	The antibody was purified from rabbit antiserum by affinity-chromatography using immunogen.
Purity:	> 95 %

Target Details

Target:	HLA-H
Alternative Name:	HLAH (HLA-H Products)
Background:	Synonyms: HLA class I histocompatibility antigen, alpha chain H,HLA-AR, HLA-12.4

Target Details

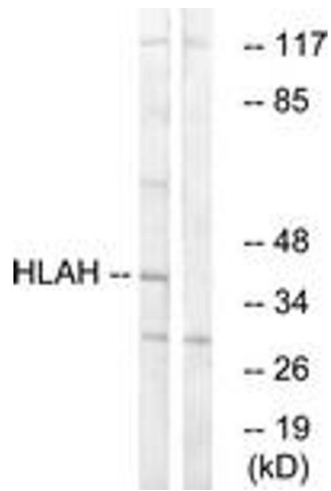
	NCBI Gene Symbol: HLAH
Molecular Weight:	40 kDa
Gene ID:	3136
OMIM:	142800
UniProt:	P01893
Pathways:	Human Leukocyte Antigen (HLA) in Adaptive Immune Response

Application Details

Application Notes:	WB: 1:500~1:1000 ELISA: 1:10000
Comment:	Unigene-Number: Hs.181244 (NCBI Gene Symbol: HLAH)
Restrictions:	For Research Use only

Handling

Format:	Liquid
Concentration:	1 mg/mL
Buffer:	phosphate buffered saline (without Mg ²⁺ and Ca ²⁺), pH 7.4, 150 mM NaCl, 0.02 % sodium azide and 50 % glycerol.
Preservative:	Sodium azide
Precaution of Use:	This product contains sodium azide: a POISONOUS AND HAZARDOUS SUBSTANCE which should be handled by trained staff only.
Storage:	-20 °C
Storage Comment:	Stable at -20°C for at least 1 year.
Expiry Date:	12 months



Western Blotting

Image 1. Western blot analysis of extracts from LOVO cells, using HLAH Antibody. The lane on the right is treated with the synthesized peptide.