

Datasheet for ABIN1534986
anti-NKX2-6 antibody (AA 91-140)



[Go to Product page](#)

1 Image

Overview

Quantity:	100 µL
Target:	NKX2-6
Binding Specificity:	AA 91-140
Reactivity:	Human
Host:	Rabbit
Clonality:	Polyclonal
Conjugate:	This NKX2-6 antibody is un-conjugated
Application:	Western Blotting (WB), ELISA

Product Details

Immunogen:	The antiserum was produced against synthesized peptide derived from human NKX26.
Isotype:	IgG
Specificity:	NKX26 Antibody detects endogenous levels of total NKX26 protein.
Purification:	The antibody was purified from rabbit antiserum by affinity-chromatography using immunogen.
Purity:	> 95 %

Target Details

Target:	NKX2-6
Alternative Name:	NKX26 (NKX2-6 Products)
Background:	Synonyms: Homeobox protein Nkx-2.6

Target Details

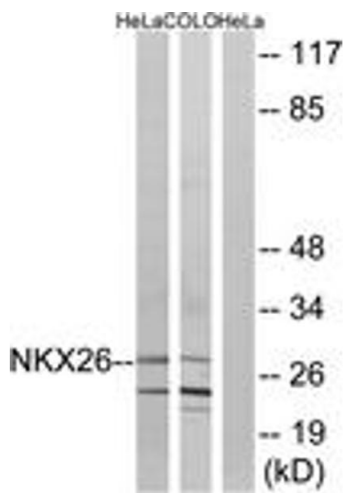
	NCBI Gene Symbol: NKX26
Molecular Weight:	32 kDa
Gene ID:	18092
OMIM:	611770
UniProt:	A6NCS4

Application Details

Application Notes:	WB: 1:500~1:1000 ELISA: 1:40000
Comment:	Unigene-Number: Hs.532654 (NCBI Gene Symbol: NKX26)
Restrictions:	For Research Use only

Handling

Format:	Liquid
Concentration:	1 mg/mL
Buffer:	phosphate buffered saline (without Mg ²⁺ and Ca ²⁺), pH 7.4, 150 mM NaCl, 0.02 % sodium azide and 50 % glycerol.
Preservative:	Sodium azide
Precaution of Use:	This product contains sodium azide: a POISONOUS AND HAZARDOUS SUBSTANCE which should be handled by trained staff only.
Storage:	-20 °C
Storage Comment:	Stable at -20°C for at least 1 year.
Expiry Date:	12 months



Western Blotting

Image 1. Western blot analysis of extracts from HeLa/COLO cells, using NKX26 Antibody. The lane on the right is treated with the synthesized peptide.