

Datasheet for ABIN1534987

anti-Six5 antibody (AA 201-250)[Go to Product page](#)**1** Image

Overview

Quantity:	100 µL
Target:	Six5 (SIX5)
Binding Specificity:	AA 201-250
Reactivity:	Human, Mouse
Host:	Rabbit
Clonality:	Polyclonal
Conjugate:	This Six5 antibody is un-conjugated
Application:	Western Blotting (WB), ELISA

Product Details

Immunogen:	The antiserum was produced against synthesized peptide derived from human SIX5.
Isotype:	IgG
Specificity:	SIX5 Antibody detects endogenous levels of total SIX5 protein.
Purification:	The antibody was purified from rabbit antiserum by affinity-chromatography using immunogen.
Purity:	> 95 %

Target Details

Target:	Six5 (SIX5)
Alternative Name:	SIX5 (SIX5 Products)
Background:	Synonyms: Homeobox protein SIX5, DM locus-associated homeodomain protein,

Target Details

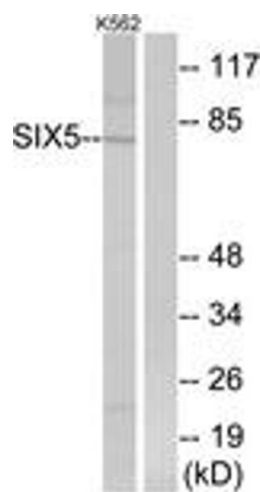
	NCBI Gene Symbol: SIX5
Molecular Weight:	74 kDa
Gene ID:	147912
OMIM:	600963
UniProt:	Q8N196

Application Details

Application Notes:	WB: 1:500~1:1000 ELISA: 1:40000
Comment:	Unigene-Number: Hs.43314, Hs.635370. (NCBI Gene Symbol: SIX5)
Restrictions:	For Research Use only

Handling

Format:	Liquid
Concentration:	1 mg/mL
Buffer:	phosphate buffered saline (without Mg ²⁺ and Ca ²⁺), pH 7.4, 150 mM NaCl, 0.02 % sodium azide and 50 % glycerol.
Preservative:	Sodium azide
Precaution of Use:	This product contains sodium azide: a POISONOUS AND HAZARDOUS SUBSTANCE which should be handled by trained staff only.
Storage:	-20 °C
Storage Comment:	Stable at -20°C for at least 1 year.
Expiry Date:	12 months



Western Blotting

Image 1. Western blot analysis of extracts from K562 cells, using SIX5 Antibody. The lane on the right is treated with the synthesized peptide.