



[Go to Product page](#)

Datasheet for ABIN1535001
anti-LILRA1 antibody (AA 53-102)

2 Images

Overview

Quantity:	100 µg
Target:	LILRA1
Binding Specificity:	AA 53-102
Reactivity:	Human
Host:	Rabbit
Clonality:	Polyclonal
Conjugate:	This LILRA1 antibody is un-conjugated
Application:	Western Blotting (WB), ELISA, Immunofluorescence (IF)

Product Details

Immunogen:	The antiserum was produced against synthesized peptide derived from human LILRA1.
Isotype:	IgG
Specificity:	LILRA1 Antibody detects endogenous levels of total LILRA1 protein.
Purification:	The antibody was purified from rabbit antiserum by affinity-chromatography using immunogen.
Purity:	> 95 %

Target Details

Target:	LILRA1
Alternative Name:	LILRA1 (LILRA1 Products)
Background:	Synonyms: Leukocyte immunoglobulin-like receptor subfamily A member 1, Leukocyte

Target Details

immunoglobulin-like receptor 6, LIR-6, CD85i antigen
NCBI Gene Symbol: LILRA1

Molecular Weight: 53 kDa

Gene ID: 11024

OMIM: 604810

UniProt: [O75019](#)

Application Details

Application Notes: WB: 1:500~1:1000 IF: 1:100~1:500 ELISA: 1:20000

Comment: Unigene-Number: Hs.710507 (NCBI Gene Symbol: LILRA1)

Restrictions: For Research Use only

Handling

Format: Liquid

Concentration: 1 mg/mL

Buffer: phosphate buffered saline (without Mg²⁺ and Ca²⁺), pH 7.4, 150 mM NaCl, 0.02 % sodium azide and 50 % glycerol.

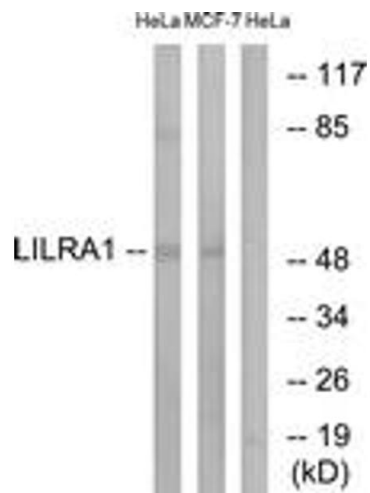
Preservative: Sodium azide

Precaution of Use: This product contains sodium azide: a POISONOUS AND HAZARDOUS SUBSTANCE which should be handled by trained staff only.

Storage: -20 °C

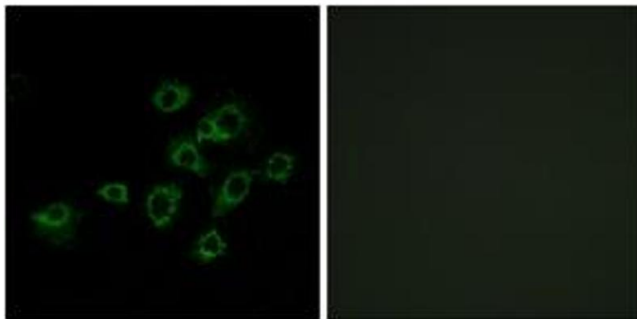
Storage Comment: Stable at -20°C for at least 1 year.

Expiry Date: 12 months



Western Blotting

Image 1. Western blot analysis of extracts from HeLa/MCF-7 cells, using LILRA1 Antibody. The lane on the right is treated with the synthesized peptide.



Immunofluorescence

Image 2. Immunofluorescence analysis of A549 cells, using LILRA1 Antibody. The picture on the right is treated with the synthesized peptide.