



[Go to Product page](#)

Datasheet for ABIN1535010
anti-LRP10 antibody (AA 204-253)

1 Image

Overview

Quantity:	100 µg
Target:	LRP10
Binding Specificity:	AA 204-253
Reactivity:	Human, Mouse, Rat
Host:	Rabbit
Clonality:	Polyclonal
Conjugate:	This LRP10 antibody is un-conjugated
Application:	ELISA, Immunohistochemistry (IHC)

Product Details

Immunogen:	The antiserum was produced against synthesized peptide derived from human LRP10.
Isotype:	IgG
Specificity:	LRP10 Antibody detects endogenous levels of total LRP10 protein.
Purification:	The antibody was purified from rabbit antiserum by affinity-chromatography using immunogen.
Purity:	> 95 %

Target Details

Target:	LRP10
Alternative Name:	LRP10 (LRP10 Products)
Background:	Synonyms: Low-density lipoprotein receptor-related protein 10

Target Details

NCBI Gene Symbol: LRP10

Molecular Weight: 76 kDa

Gene ID: 26020

OMIM: 609921

UniProt: [Q7Z4F1](#)

Application Details

Application Notes: IHC: 1:50~1:100 ELISA: 1:10000

Comment: Unigene-Number: Hs.525232 (NCBI Gene Symbol: LRP10)

Restrictions: For Research Use only

Handling

Format: Liquid

Concentration: 1 mg/mL

Buffer: phosphate buffered saline (without Mg²⁺ and Ca²⁺), pH 7.4, 150 mM NaCl, 0.02 % sodium azide and 50 % glycerol.

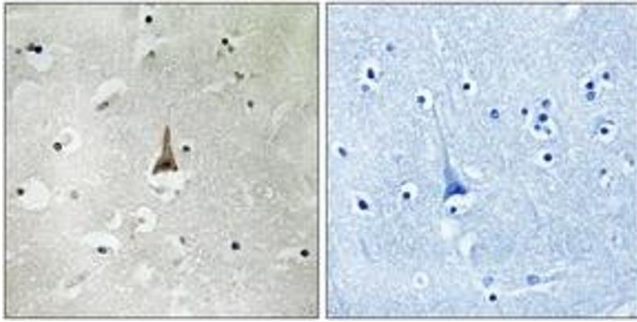
Preservative: Sodium azide

Precaution of Use: This product contains sodium azide: a POISONOUS AND HAZARDOUS SUBSTANCE which should be handled by trained staff only.

Storage: -20 °C

Storage Comment: Stable at -20°C for at least 1 year.

Expiry Date: 12 months



Immunohistochemistry

Image 1. Immunohistochemistry analysis of paraffin-embedded human brain tissue, using LRP10 Antibody. The picture on the right is treated with the synthesized peptide.