

Datasheet for ABIN1535012  
**anti-LRP3 antibody (AA 17-66)**[Go to Product page](#)

## 1 Image

## Overview

Quantity:	100 µg
Target:	LRP3
Binding Specificity:	AA 17-66
Reactivity:	Human, Mouse, Rat
Host:	Rabbit
Clonality:	Polyclonal
Conjugate:	This LRP3 antibody is un-conjugated
Application:	Western Blotting (WB), ELISA

## Product Details

Immunogen:	The antiserum was produced against synthesized peptide derived from human LRP3.
Isotype:	IgG
Specificity:	LRP3 Antibody detects endogenous levels of total LRP3 protein.
Purification:	The antibody was purified from rabbit antiserum by affinity-chromatography using immunogen.
Purity:	> 95 %

## Target Details

Target:	LRP3
Alternative Name:	LRP3 ( <a href="#">LRP3 Products</a> )
Background:	Synonyms: Low-density lipoprotein receptor-related protein 3, hLRp105

## Target Details

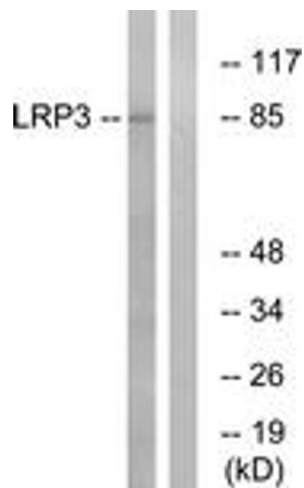
	NCBI Gene Symbol: LRP3
Molecular Weight:	82 kDa
Gene ID:	4037
OMIM:	603159
UniProt:	<a href="#">O75074</a>

## Application Details

Application Notes:	WB: 1:500~1:1000 ELISA: 1:40000
Comment:	Unigene-Number: Hs.515340 (NCBI Gene Symbol: LRP3)
Restrictions:	For Research Use only

## Handling

Format:	Liquid
Concentration:	1 mg/mL
Buffer:	phosphate buffered saline (without Mg <sup>2+</sup> and Ca <sup>2+</sup> ), pH 7.4, 150 mM NaCl, 0.02 % sodium azide and 50 % glycerol.
Preservative:	Sodium azide
Precaution of Use:	This product contains sodium azide: a POISONOUS AND HAZARDOUS SUBSTANCE which should be handled by trained staff only.
Storage:	-20 °C
Storage Comment:	Stable at -20°C for at least 1 year.
Expiry Date:	12 months



Western Blotting

**Image 1.** Western blot analysis of extracts from RAW264.7 cells, using LRP3 Antibody. The lane on the right is treated with the synthesized peptide.