

Datasheet for ABIN1535021
anti-MRPS21 antibody (AA 38-87)

3 Images

[Go to Product page](#)

Overview

Quantity:	100 µg
Target:	MRPS21
Binding Specificity:	AA 38-87
Reactivity:	Human, Mouse, Rat
Host:	Rabbit
Clonality:	Polyclonal
Conjugate:	This MRPS21 antibody is un-conjugated
Application:	Immunohistochemistry (IHC), ELISA, Western Blotting (WB), Immunofluorescence (IF)

Product Details

Immunogen:	The antiserum was produced against synthesized peptide derived from human MRPS21.
Isotype:	IgG
Specificity:	MRPS21 Antibody detects endogenous levels of total MRPS21 protein.
Purification:	The antibody was purified from rabbit antiserum by affinity-chromatography using immunogen.
Purity:	> 95 %

Target Details

Target:	MRPS21
Alternative Name:	MRPS21 (MRPS21 Products)
Background:	Synonyms: Mitochondrial 28S ribosomal protein S21,S21mt, MRP-S21

Target Details

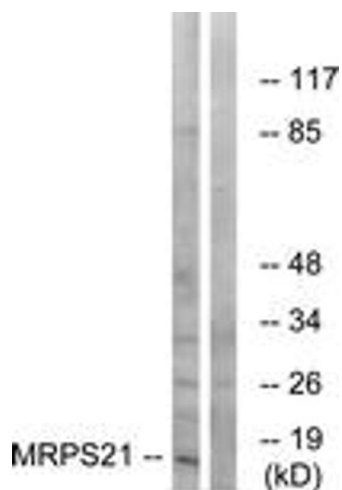
	NCBI Gene Symbol: MRPS21
Molecular Weight:	10 kDa
Gene ID:	54460
UniProt:	P82921

Application Details

Application Notes:	WB: 1:500~1:1000 IHC: 1:50~1:100 IF: 1:100~1:500 ELISA: 1:40000
Comment:	Unigene-Number: Hs.405880 (NCBI Gene Symbol: MRPS21)
Restrictions:	For Research Use only

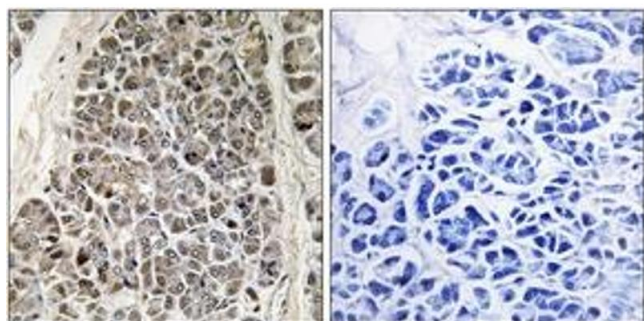
Handling

Format:	Liquid
Concentration:	1 mg/mL
Buffer:	phosphate buffered saline (without Mg2+ and Ca2+), pH 7.4, 150 mM NaCl, 0.02 % sodium azide and 50 % glycerol.
Preservative:	Sodium azide
Precaution of Use:	This product contains sodium azide: a POISONOUS AND HAZARDOUS SUBSTANCE which should be handled by trained staff only.
Storage:	-20 °C
Storage Comment:	Stable at -20°C for at least 1 year.
Expiry Date:	12 months



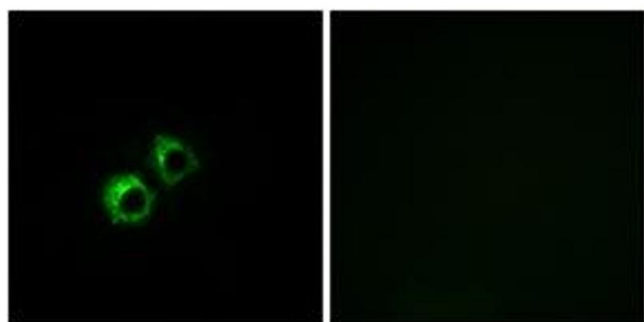
Western Blotting

Image 1. Western blot analysis of extracts from COS cells, using MRPS21 Antibody. The lane on the right is treated with the synthesized peptide.



Immunohistochemistry

Image 2. Immunohistochemistry analysis of paraffin-embedded human pancreas tissue, using MRPS21 Antibody. The picture on the right is treated with the synthesized peptide.



Immunofluorescence

Image 3. Immunofluorescence analysis of MCF7 cells, using MRPS21 Antibody. The picture on the right is treated with the synthesized peptide.