



[Go to Product page](#)

Datasheet for ABIN1535027

anti-MRPS33 antibody (AA 51-100)

1 Image

Overview

Quantity:	100 µg
Target:	MRPS33
Binding Specificity:	AA 51-100
Reactivity:	Human, Mouse, Rat
Host:	Rabbit
Clonality:	Polyclonal
Conjugate:	This MRPS33 antibody is un-conjugated
Application:	Immunohistochemistry (IHC), ELISA

Product Details

Immunogen:	The antiserum was produced against synthesized peptide derived from human MRPS33.
Isotype:	IgG
Specificity:	MRPS33 Antibody detects endogenous levels of total MRPS33 protein.
Purification:	The antibody was purified from rabbit antiserum by affinity-chromatography using immunogen.
Purity:	> 95 %

Target Details

Target:	MRPS33
Alternative Name:	MRPS33 (MRPS33 Products)
Background:	Synonyms: Mitochondrial 28S ribosomal protein S33,S33mt, MRP-S33,

Target Details

NCBI Gene Symbol: MRPS33

Molecular Weight: 12 kDa

Gene ID: 51650

OMIM: 611993

UniProt: [Q9Y291](#)

Application Details

Application Notes: IHC: 1:50~1:100 ELISA: 1:10000

Comment: Unigene-Number: Hs.416207 (NCBI Gene Symbol: MRPS33)

Restrictions: For Research Use only

Handling

Format: Liquid

Concentration: 1 mg/mL

Buffer: phosphate buffered saline (without Mg²⁺ and Ca²⁺), pH 7.4, 150 mM NaCl, 0.02 % sodium azide and 50 % glycerol.

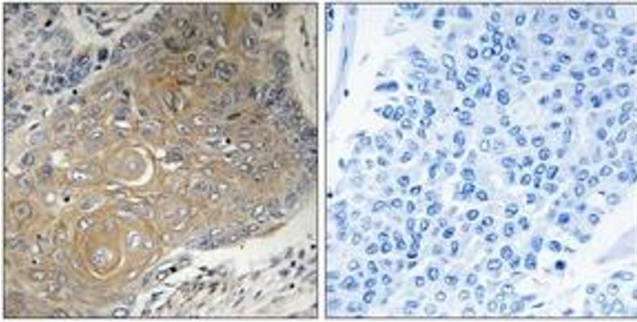
Preservative: Sodium azide

Precaution of Use: This product contains sodium azide: a POISONOUS AND HAZARDOUS SUBSTANCE which should be handled by trained staff only.

Storage: -20 °C

Storage Comment: Stable at -20°C for at least 1 year.

Expiry Date: 12 months



Immunohistochemistry

Image 1. Immunohistochemistry analysis of paraffin-embedded human lung carcinoma tissue, using MRPS33 Antibody. The picture on the right is treated with the synthesized peptide.