



[Go to Product page](#)

Datasheet for ABIN1535029

anti-MRPS36 antibody (AA 4-53)

2 Images

Overview

Quantity:	100 µg
Target:	MRPS36
Binding Specificity:	AA 4-53
Reactivity:	Human
Host:	Rabbit
Clonality:	Polyclonal
Conjugate:	This MRPS36 antibody is un-conjugated
Application:	ELISA, Western Blotting (WB), Immunohistochemistry (IHC)

Product Details

Immunogen:	The antiserum was produced against synthesized peptide derived from human MRPS36.
Isotype:	IgG
Specificity:	MRPS36 Antibody detects endogenous levels of total MRPS36 protein.
Purification:	The antibody was purified from rabbit antiserum by affinity-chromatography using immunogen.
Purity:	> 95 %

Target Details

Target:	MRPS36
Alternative Name:	MRPS36 (MRPS36 Products)
Background:	Synonyms: Mitochondrial 28S ribosomal protein S36,S36mt, MRP-S36

Target Details

NCBI Gene Symbol: MRPS36

Molecular Weight: 11 kDa

Gene ID: 92259

OMIM: 611996

UniProt: [P82909](#)

Application Details

Application Notes: WB: 1:500~1:1000 IHC: 1:50~1:100 ELISA: 1:10000

Comment: Unigene-Number: Hs.631971 (NCBI Gene Symbol: MRPS36)

Restrictions: For Research Use only

Handling

Format: Liquid

Concentration: 1 mg/mL

Buffer: phosphate buffered saline (without Mg²⁺ and Ca²⁺), pH 7.4, 150 mM NaCl, 0.02 % sodium azide and 50 % glycerol.

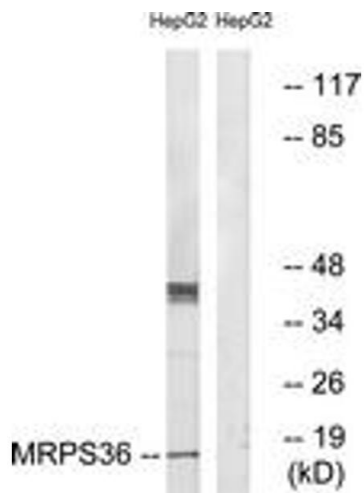
Preservative: Sodium azide

Precaution of Use: This product contains sodium azide: a POISONOUS AND HAZARDOUS SUBSTANCE which should be handled by trained staff only.

Storage: -20 °C

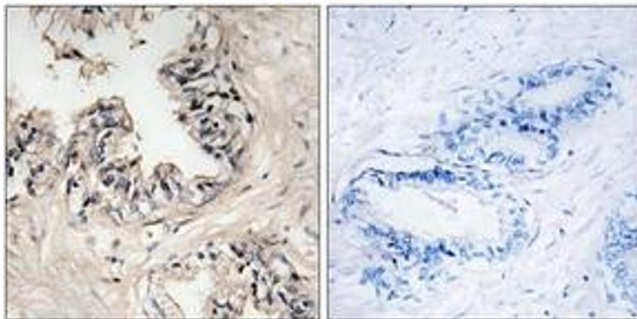
Storage Comment: Stable at -20°C for at least 1 year.

Expiry Date: 12 months



Western Blotting

Image 1. Western blot analysis of extracts from HepG2 cells, using MRPS36 Antibody. The lane on the right is treated with the synthesized peptide.



Immunohistochemistry

Image 2. Immunohistochemistry analysis of paraffin-embedded human prostate carcinoma tissue, using MRPS36 Antibody. The picture on the right is treated with the synthesized peptide.