



[Go to Product page](#)

Datasheet for ABIN1535031
anti-SLC25A21 antibody (AA 134-183)

2 Images

Overview

Quantity:	100 µg
Target:	SLC25A21 (Slc25a21)
Binding Specificity:	AA 134-183
Reactivity:	Human, Rat, Mouse
Host:	Rabbit
Clonality:	Polyclonal
Conjugate:	This SLC25A21 antibody is un-conjugated
Application:	Western Blotting (WB), ELISA, Immunohistochemistry (IHC)

Product Details

Immunogen:	The antiserum was produced against synthesized peptide derived from human SLC25A21.
Isotype:	IgG
Specificity:	SLC25A21 Antibody detects endogenous levels of total SLC25A21 protein.
Purification:	The antibody was purified from rabbit antiserum by affinity-chromatography using immunogen.
Purity:	> 95 %

Target Details

Target:	SLC25A21 (Slc25a21)
Alternative Name:	SLC25A21 (Slc25a21 Products)
Background:	Synonyms: Mitochondrial 2-oxodicarboxylate carrier, Solute carrier family 25 member 21,

Target Details

NCBI Gene Symbol: SLC25A21

Molecular Weight: 33 kDa

Gene ID: 89874

OMIM: 607571

UniProt: [Q9BQT8](#)

Pathways: [SARS-CoV-2 Protein Interactome](#)

Application Details

Application Notes: WB: 1:500~1:1000 IHC: 1:50~1:100 ELISA: 1:40000

Comment: Unigene-Number: Hs.601579 (NCBI Gene Symbol: SLC25A21)

Restrictions: For Research Use only

Handling

Format: Liquid

Concentration: 1 mg/mL

Buffer: phosphate buffered saline (without Mg²⁺ and Ca²⁺), pH 7.4, 150 mM NaCl, 0.02 % sodium azide and 50 % glycerol.

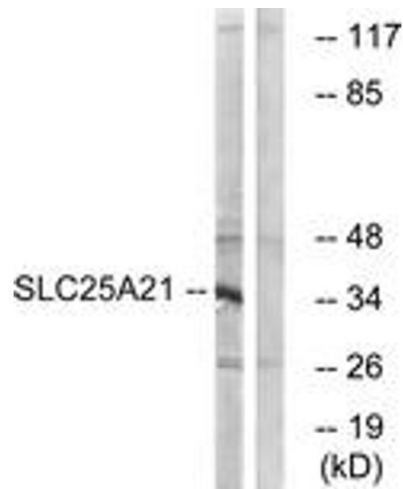
Preservative: Sodium azide

Precaution of Use: This product contains sodium azide: a POISONOUS AND HAZARDOUS SUBSTANCE which should be handled by trained staff only.

Storage: -20 °C

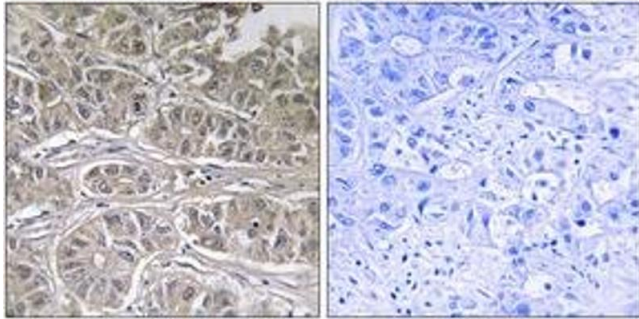
Storage Comment: Stable at -20°C for at least 1 year.

Expiry Date: 12 months



Western Blotting

Image 1. Western blot analysis of extracts from HepG2 cells, using SLC25A21 Antibody. The lane on the right is treated with the synthesized peptide.



Immunohistochemistry

Image 2. Immunohistochemistry analysis of paraffin-embedded human liver carcinoma tissue, using SLC25A21 Antibody. The picture on the right is treated with the synthesized peptide.