

Datasheet for ABIN1535036
anti-MOT12 antibody (AA 115-164)[Go to Product page](#)

1 Image

Overview

Quantity:	100 µg
Target:	MOT12 (methylase)
Binding Specificity:	AA 115-164
Reactivity:	Human, Mouse
Host:	Rabbit
Clonality:	Polyclonal
Conjugate:	This MOT12 antibody is un-conjugated
Application:	Immunohistochemistry (IHC), ELISA

Product Details

Immunogen:	The antiserum was produced against synthesized peptide derived from human MOT12.
Isotype:	IgG
Specificity:	MOT12 Antibody detects endogenous levels of total MOT12 protein.
Purification:	The antibody was purified from rabbit antiserum by affinity-chromatography using immunogen.
Purity:	> 95 %

Target Details

Target:	MOT12 (methylase)
Alternative Name:	MOT12 (methylase Products)
Background:	Synonyms: Monocarboxylate transporter 12, MCT 12, Solute carrier family 16 member 12,

Target Details

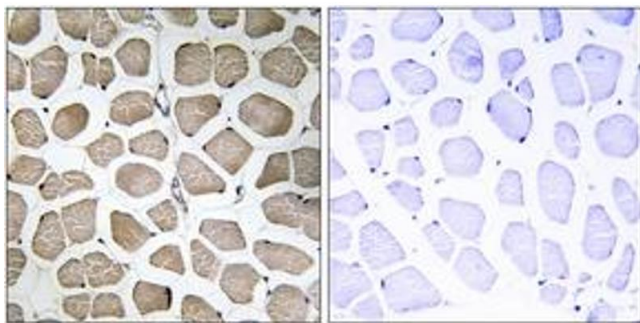
	NCBI Gene Symbol: SLC16A12
Molecular Weight:	53 kDa
Gene ID:	387700
OMIM:	611910
UniProt:	Q6ZSM3

Application Details

Application Notes:	IHC: 1:50~1:100 ELISA: 1:20000
Comment:	Unigene-Number: Hs.530338 (NCBI Gene Symbol: SLC16A12)
Restrictions:	For Research Use only

Handling

Format:	Liquid
Concentration:	1 mg/mL
Buffer:	phosphate buffered saline (without Mg ²⁺ and Ca ²⁺), pH 7.4, 150 mM NaCl, 0.02 % sodium azide and 50 % glycerol.
Preservative:	Sodium azide
Precaution of Use:	This product contains sodium azide: a POISONOUS AND HAZARDOUS SUBSTANCE which should be handled by trained staff only.
Storage:	-20 °C
Storage Comment:	Stable at -20°C for at least 1 year.
Expiry Date:	12 months



Immunohistochemistry

Image 1. Immunohistochemistry analysis of paraffin-embedded human skeletal muscle tissue, using MOT12 Antibody. The picture on the right is treated with the synthesized peptide.