



[Go to Product page](#)

Datasheet for ABIN1535038  
**anti-SLC16A14 antibody (AA 131-180)**

1 Image

Overview

Quantity:	100 µL
Target:	SLC16A14
Binding Specificity:	AA 131-180
Reactivity:	Human, Mouse
Host:	Rabbit
Clonality:	Polyclonal
Conjugate:	This SLC16A14 antibody is un-conjugated
Application:	ELISA, Western Blotting (WB)

Product Details

Immunogen:	The antiserum was produced against synthesized peptide derived from human MOT14.
Isotype:	IgG
Specificity:	MOT14 Antibody detects endogenous levels of total MOT14 protein.
Purification:	The antibody was purified from rabbit antiserum by affinity-chromatography using immunogen.
Purity:	> 95 %

Target Details

Target:	SLC16A14
Abstract:	<a href="#">SLC16A14 Products</a>
Background:	Synonyms: Monocarboxylate transporter 14, MCT 14, Solute carrier family 16 member 14,

## Target Details

---

NCBI Gene Symbol: SLC16A14

Molecular Weight: 56 kDa

Gene ID: 151473

UniProt: [Q7RTX9](#)

## Application Details

---

Application Notes: WB: 1:500~1:1000 ELISA: 1:10000

Comment: Unigene-Number: Hs.504317 (NCBI Gene Symbol: SLC16A14)

Restrictions: For Research Use only

## Handling

---

Format: Liquid

Concentration: 1 mg/mL

Buffer: phosphate buffered saline (without Mg<sup>2+</sup> and Ca<sup>2+</sup>), pH 7.4, 150 mM NaCl, 0.02 % sodium azide and 50 % glycerol.

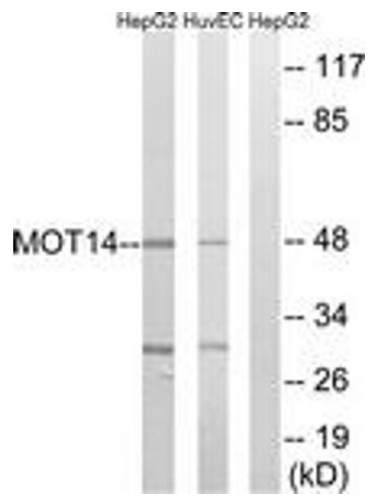
Preservative: Sodium azide

Precaution of Use: This product contains sodium azide: a POISONOUS AND HAZARDOUS SUBSTANCE which should be handled by trained staff only.

Storage: -20 °C

Storage Comment: Stable at -20°C for at least 1 year.

Expiry Date: 12 months



### Western Blotting

**Image 1.** Western blot analysis of extracts from HuvEc/HepG2 cells, using MOT14 Antibody. The lane on the right is treated with the synthesized peptide.