



[Go to Product page](#)

Datasheet for ABIN1535042
anti-MEGF8 antibody (AA 1243-1292)

1 Image

Overview

Quantity:	100 µg
Target:	MEGF8
Binding Specificity:	AA 1243-1292
Reactivity:	Human
Host:	Rabbit
Clonality:	Polyclonal
Conjugate:	This MEGF8 antibody is un-conjugated
Application:	ELISA, Western Blotting (WB)

Product Details

Immunogen:	The antiserum was produced against synthesized peptide derived from human MEGF8.
Isotype:	IgG
Specificity:	MEGF8 Antibody detects endogenous levels of total MEGF8 protein.
Purification:	The antibody was purified from rabbit antiserum by affinity-chromatography using immunogen.
Purity:	> 95 %

Target Details

Target:	MEGF8
Alternative Name:	MEGF8 (MEGF8 Products)
Background:	Synonyms: Multiple epidermal growth factor-like domains 8, EGF-like domain-containing protein

Target Details

4, Multiple EGF-like domain protein 4,
NCBI Gene Symbol: MEGF8

Molecular Weight: 254 kDa

Gene ID: 1954

OMIM: 604267

UniProt: [Q7Z7M0](#)

Application Details

Application Notes: WB: 1:500~1:1000 ELISA: 1:20000

Comment: Unigene-Number: Hs.132483 (NCBI Gene Symbol: MEGF8)

Restrictions: For Research Use only

Handling

Format: Liquid

Concentration: 1 mg/mL

Buffer: phosphate buffered saline (without Mg²⁺ and Ca²⁺), pH 7.4, 150 mM NaCl, 0.02 % sodium azide and 50 % glycerol.

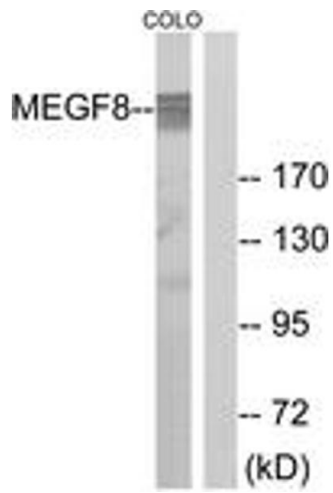
Preservative: Sodium azide

Precaution of Use: This product contains sodium azide: a POISONOUS AND HAZARDOUS SUBSTANCE which should be handled by trained staff only.

Storage: -20 °C

Storage Comment: Stable at -20°C for at least 1 year.

Expiry Date: 12 months



Western Blotting

Image 1. Western blot analysis of extracts from COLO cells, using MEGF8 Antibody. The lane on the right is treated with the synthesized peptide.