

Datasheet for ABIN1535055
anti-NAD-ME antibody (AA 201-250)[Go to Product page](#)

2 Images

Overview

Quantity:	100 µg
Target:	NAD-ME
Binding Specificity:	AA 201-250
Reactivity:	Human
Host:	Rabbit
Clonality:	Polyclonal
Conjugate:	This NAD-ME antibody is un-conjugated
Application:	Western Blotting (WB), ELISA, Immunohistochemistry (IHC)

Product Details

Immunogen:	The antiserum was produced against synthesized peptide derived from human ME2.
Isotype:	IgG
Specificity:	ME2 Antibody detects endogenous levels of total ME2 protein.
Purification:	The antibody was purified from rabbit antiserum by affinity-chromatography using immunogen.
Purity:	> 95 %

Target Details

Target:	NAD-ME
Alternative Name:	ME2 (NAD-ME Products)
Background:	Synonyms: NAD-dependent malic enzyme, mitochondrial, NAD-ME, Malic enzyme 2

Target Details

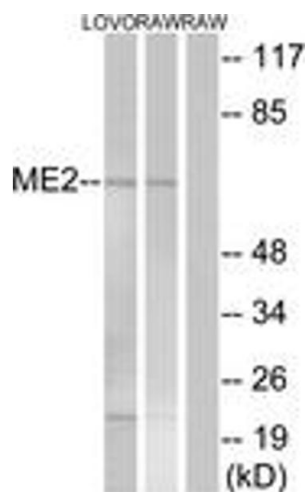
	NCBI Gene Symbol: ME2
Molecular Weight:	65 kDa
Gene ID:	4200
OMIM:	154270
UniProt:	P23368
Pathways:	Production of Molecular Mediator of Immune Response

Application Details

Application Notes:	WB: 1:500~1:1000 IHC: 1:50~1:100 ELISA: 1:40000
Comment:	Unigene-Number: Hs.233119 (NCBI Gene Symbol: ME2)
Restrictions:	For Research Use only

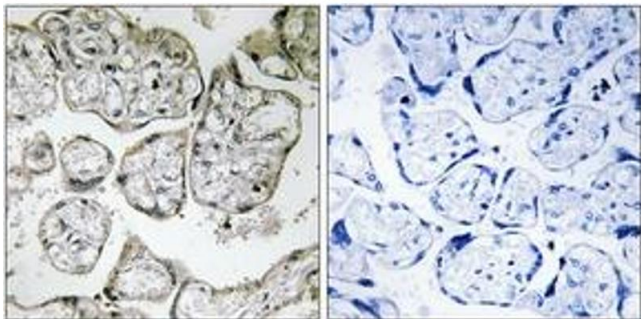
Handling

Format:	Liquid
Concentration:	1 mg/mL
Buffer:	phosphate buffered saline (without Mg ²⁺ and Ca ²⁺), pH 7.4, 150 mM NaCl, 0.02 % sodium azide and 50 % glycerol.
Preservative:	Sodium azide
Precaution of Use:	This product contains sodium azide: a POISONOUS AND HAZARDOUS SUBSTANCE which should be handled by trained staff only.
Storage:	-20 °C
Storage Comment:	Stable at -20°C for at least 1 year.
Expiry Date:	12 months



Western Blotting

Image 1. Western blot analysis of extracts from RAW264.7/LOVO cells, using ME2 Antibody. The lane on the right is treated with the synthesized peptide.



Immunohistochemistry

Image 2. Immunohistochemistry analysis of paraffin-embedded human placenta tissue, using ME2 Antibody. The picture on the right is treated with the synthesized peptide.