

Datasheet for ABIN1535071
anti-MT-ND1 antibody (AA 176-225)[Go to Product page](#)

2 Images

Overview

Quantity:	100 µg
Target:	MT-ND1
Binding Specificity:	AA 176-225
Reactivity:	Human
Host:	Rabbit
Clonality:	Polyclonal
Conjugate:	This MT-ND1 antibody is un-conjugated
Application:	Western Blotting (WB), ELISA, Immunohistochemistry (IHC)

Product Details

Immunogen:	The antiserum was produced against synthesized peptide derived from human MT-ND1.
Isotype:	IgG
Specificity:	MT-ND1 Antibody detects endogenous levels of total MT-ND1 protein.
Purification:	The antibody was purified from rabbit antiserum by affinity-chromatography using immunogen.
Purity:	> 95 %

Target Details

Target:	MT-ND1
Alternative Name:	MT-ND1 (MT-ND1 Products)
Background:	Synonyms: NADH-ubiquinone oxidoreductase chain 1, NADH dehydrogenase subunit 1,

Target Details

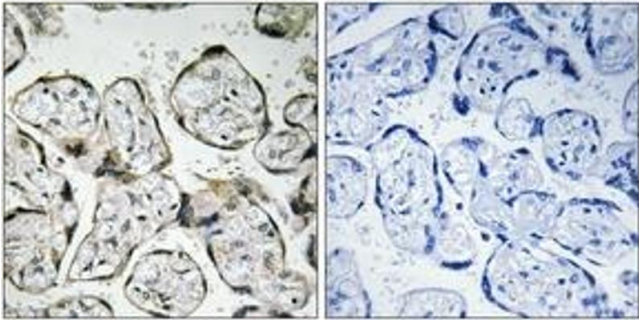
	NCBI Gene Symbol: MT-ND1
Molecular Weight:	35 kDa
Gene ID:	4535
OMIM:	502500
UniProt:	P03886

Application Details

Application Notes:	WB: 1:500~1:1000 IHC: 1:50~1:100 ELISA: 1:40000
Comment:	(NCBI Gene Symbol: MT-ND1)
Restrictions:	For Research Use only

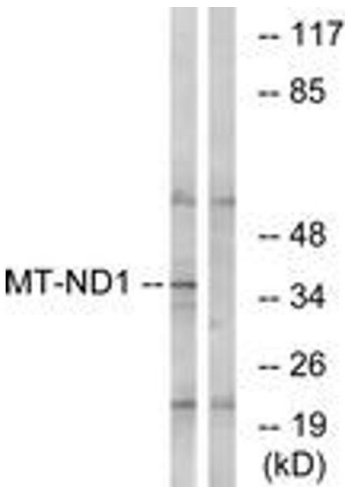
Handling

Format:	Liquid
Concentration:	1 mg/mL
Buffer:	phosphate buffered saline (without Mg ²⁺ and Ca ²⁺), pH 7.4, 150 mM NaCl, 0.02 % sodium azide and 50 % glycerol.
Preservative:	Sodium azide
Precaution of Use:	This product contains sodium azide: a POISONOUS AND HAZARDOUS SUBSTANCE which should be handled by trained staff only.
Storage:	-20 °C
Storage Comment:	Stable at -20°C for at least 1 year.
Expiry Date:	12 months



Immunohistochemistry

Image 1. Immunohistochemistry analysis of paraffin-embedded human placenta tissue, using MT-ND1 Antibody. The picture on the right is treated with the synthesized peptide.



Western Blotting

Image 2. Western blot analysis of extracts from Jurkat cells, using MT-ND1 Antibody. The lane on the right is treated with the synthesized peptide.