

Datasheet for ABIN1535119
anti-RBM39 antibody (AA 147-196)[Go to Product page](#)

2 Images

Overview

Quantity:	100 µg
Target:	RBM39
Binding Specificity:	AA 147-196
Reactivity:	Human, Mouse, Rat
Host:	Rabbit
Clonality:	Polyclonal
Conjugate:	This RBM39 antibody is un-conjugated
Application:	Western Blotting (WB), ELISA, Immunohistochemistry (IHC)

Product Details

Immunogen:	The antiserum was produced against synthesized peptide derived from human HCC1.
Isotype:	IgG
Specificity:	HCC1 Antibody detects endogenous levels of total HCC1 protein.
Purification:	The antibody was purified from rabbit antiserum by affinity-chromatography using immunogen.
Purity:	> 95 %

Target Details

Target:	RBM39
Alternative Name:	HCC1 (RBM39 Products)
Background:	Synonyms: Nuclear protein Hcc-1, Proliferation-associated cytokine-inducible protein CIP29,

Target Details

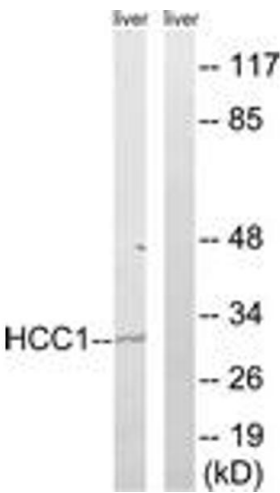
	Cytokine-induced protein of 29 kDa NCBI Gene Symbol: SARNP
Molecular Weight:	23 kDa
Gene ID:	84324
OMIM:	610049
UniProt:	P82979

Application Details

Application Notes:	WB: 1:500~1:1000 IHC: 1:50~1:100 ELISA: 1:10000
Comment:	Unigene-Number: Hs.505676 (NCBI Gene Symbol: SARNP)
Restrictions:	For Research Use only

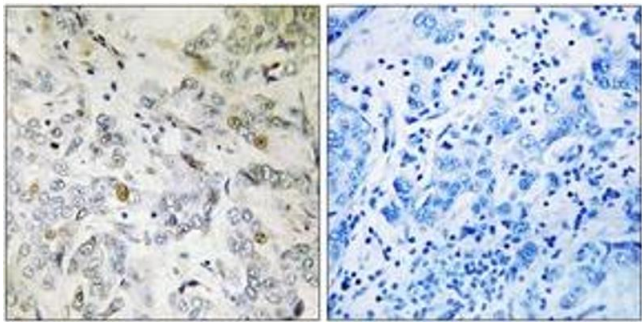
Handling

Format:	Liquid
Concentration:	1 mg/mL
Buffer:	phosphate buffered saline (without Mg ²⁺ and Ca ²⁺), pH 7.4, 150 mM NaCl, 0.02 % sodium azide and 50 % glycerol.
Preservative:	Sodium azide
Precaution of Use:	This product contains sodium azide: a POISONOUS AND HAZARDOUS SUBSTANCE which should be handled by trained staff only.
Storage:	-20 °C
Storage Comment:	Stable at -20°C for at least 1 year.
Expiry Date:	12 months



Western Blotting

Image 1. Western blot analysis of extracts from mouse liver cells, using HCC1 Antibody. The lane on the right is treated with the synthesized peptide.



Immunohistochemistry

Image 2. Immunohistochemistry analysis of paraffin-embedded human breast carcinoma tissue, using HCC1 Antibody. The picture on the right is treated with the synthesized peptide.