



[Go to Product page](#)

Datasheet for ABIN1535129
anti-NOM1 antibody (AA 661-710)

1 Image

Overview

Quantity:	100 µL
Target:	NOM1
Binding Specificity:	AA 661-710
Reactivity:	Human, Mouse
Host:	Rabbit
Clonality:	Polyclonal
Conjugate:	This NOM1 antibody is un-conjugated
Application:	Immunohistochemistry (IHC), ELISA

Product Details

Immunogen:	The antiserum was produced against synthesized peptide derived from human NOM1.
Isotype:	IgG
Specificity:	NOM1 Antibody detects endogenous levels of total NOM1 protein.
Purification:	The antibody was purified from rabbit antiserum by affinity-chromatography using immunogen.
Purity:	> 95 %

Target Details

Target:	NOM1
Alternative Name:	NOM1 (NOM1 Products)
Background:	Synonyms: Nucleolar MIF4G domain-containing protein 1, SGD1 homolog, NOM1, C7orf3

Target Details

NCBI Gene Symbol: NOM1

Molecular Weight: 96 kDa

Gene ID: 64434

OMIM: 611269

UniProt: [Q5C9Z4](#)

Application Details

Application Notes: IHC: 1:50~1:100 ELISA: 1:40000

Comment: Unigene-Number: Hs.15825 (NCBI Gene Symbol: NOM1)

Restrictions: For Research Use only

Handling

Format: Liquid

Concentration: 1 mg/mL

Buffer: phosphate buffered saline (without Mg²⁺ and Ca²⁺), pH 7.4, 150 mM NaCl, 0.02 % sodium azide and 50 % glycerol.

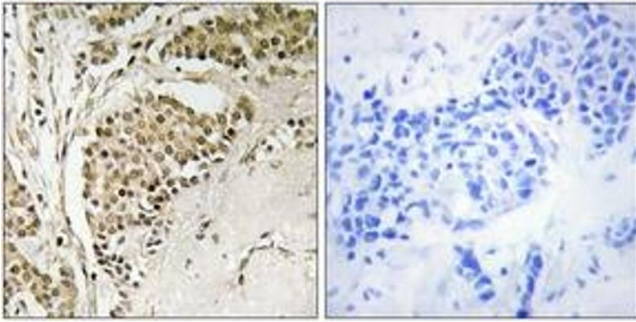
Preservative: Sodium azide

Precaution of Use: This product contains sodium azide: a POISONOUS AND HAZARDOUS SUBSTANCE which should be handled by trained staff only.

Storage: -20 °C

Storage Comment: Stable at -20°C for at least 1 year.

Expiry Date: 12 months



Immunohistochemistry

Image 1. Immunohistochemistry analysis of paraffin-embedded human breast carcinoma tissue, using NOM1 Antibody. The picture on the right is treated with the synthesized peptide.