



[Go to Product page](#)

Datasheet for ABIN1535137
anti-SLC6A16 antibody (AA 233-282)

1 Image

Overview

Quantity:	100 µL
Target:	SLC6A16
Binding Specificity:	AA 233-282
Reactivity:	Human
Host:	Rabbit
Clonality:	Polyclonal
Conjugate:	This SLC6A16 antibody is un-conjugated
Application:	ELISA, Immunohistochemistry (IHC)

Product Details

Immunogen:	The antiserum was produced against synthesized peptide derived from human SLC6A16.
Isotype:	IgG
Specificity:	SLC6A16 Antibody detects endogenous levels of total SLC6A16 protein.
Purification:	The antibody was purified from rabbit antiserum by affinity-chromatography using immunogen.
Purity:	> 95 %

Target Details

Target:	SLC6A16
Alternative Name:	SLC6A16 (SLC6A16 Products)
Background:	Synonyms: Orphan sodium- and chloride-dependent neurotransmitter transporter NTT5,Solute

Target Details

carrier family 6 member 16
NCBI Gene Symbol: SLC6A16

Molecular Weight: 82 kDa

Gene ID: 28968

OMIM: 607972

UniProt: [Q9GZN6](#)

Application Details

Application Notes: IHC: 1:50~1:100 ELISA: 1:40000

Comment: Unigene-Number: Hs.130949 (NCBI Gene Symbol: SLC6A16)

Restrictions: For Research Use only

Handling

Format: Liquid

Concentration: 1 mg/mL

Buffer: phosphate buffered saline (without Mg²⁺ and Ca²⁺), pH 7.4, 150 mM NaCl, 0.02 % sodium azide and 50 % glycerol.

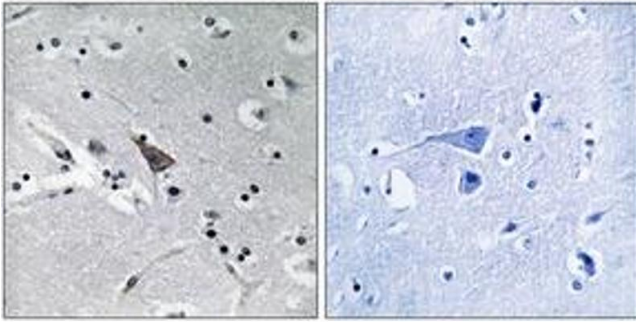
Preservative: Sodium azide

Precaution of Use: This product contains sodium azide: a POISONOUS AND HAZARDOUS SUBSTANCE which should be handled by trained staff only.

Storage: -20 °C

Storage Comment: Stable at -20°C for at least 1 year.

Expiry Date: 12 months



Immunohistochemistry

Image 1. Immunohistochemistry analysis of paraffin-embedded human brain, using SLC6A16 Antibody. The picture on the right is treated with the synthesized peptide.