

Datasheet for ABIN1535138
anti-SLC6A15 antibody (AA 32-81)



[Go to Product page](#)

1 Image

Overview

Quantity:	100 µL
Target:	SLC6A15
Binding Specificity:	AA 32-81
Reactivity:	Human
Host:	Rabbit
Clonality:	Polyclonal
Conjugate:	This SLC6A15 antibody is un-conjugated
Application:	Western Blotting (WB), ELISA

Product Details

Immunogen:	The antiserum was produced against synthesized peptide derived from human SLC6A15.
Isotype:	IgG
Specificity:	SLC6A15 Antibody detects endogenous levels of total SLC6A15 protein.
Purification:	The antibody was purified from rabbit antiserum by affinity-chromatography using immunogen.
Purity:	> 95 %

Target Details

Target:	SLC6A15
Alternative Name:	SLC6A15 (SLC6A15 Products)
Background:	Synonyms: Orphan sodium- and chloride-dependent neurotransmitter transporter NTT73,

Target Details

Orphan transporter v7-3, Solute carrier family 6 member 15
NCBI Gene Symbol: SLC6A15

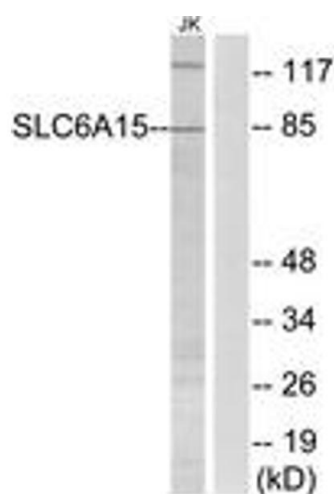
Molecular Weight: 81 kDa
Gene ID: 55117
OMIM: 607971
UniProt: [Q9H2J7](#)

Application Details

Application Notes: WB: 1:500~1:1000 ELISA: 1:40000
Comment: Unigene-Number: Hs.44424、 *Hs.721840 (NCBI Gene Symbol: SLC6A15)*
Restrictions: For Research Use only

Handling

Format: Liquid
Concentration: 1 mg/mL
Buffer: phosphate buffered saline (without Mg2+ and Ca2+), pH 7.4, 150 mM NaCl, 0.02 % sodium azide and 50 % glycerol.
Preservative: Sodium azide
Precaution of Use: This product contains sodium azide: a POISONOUS AND HAZARDOUS SUBSTANCE which should be handled by trained staff only.
Storage: -20 °C
Storage Comment: Stable at -20°C for at least 1 year.
Expiry Date: 12 months



Western Blotting

Image 1. Western blot analysis of extracts from Jurkat cells, using SLC6A15 Antibody. The lane on the right is treated with the synthesized peptide.