



[Go to Product page](#)

Datasheet for ABIN1535141
anti-ZDHHC15 antibody (AA 288-337)

1 Image

Overview

Quantity:	100 µg
Target:	ZDHHC15
Binding Specificity:	AA 288-337
Reactivity:	Human
Host:	Rabbit
Clonality:	Polyclonal
Conjugate:	This ZDHHC15 antibody is un-conjugated
Application:	ELISA, Western Blotting (WB)

Product Details

Immunogen:	The antiserum was produced against synthesized peptide derived from human ZDHHC15.
Isotype:	IgG
Specificity:	ZDHHC15 Antibody detects endogenous levels of total ZDHHC15 protein.
Purification:	The antibody was purified from rabbit antiserum by affinity-chromatography using immunogen.
Purity:	> 95 %

Target Details

Target:	ZDHHC15
Alternative Name:	ZDHHC15 (ZDHHC15 Products)
Background:	Synonyms: Palmitoyltransferase ZDHHC15, Zinc finger DHHC domain-containing protein 15,

Target Details

DHHC-15,
NCBI Gene Symbol: ZDHHC15

Molecular Weight: 39 kDa

Gene ID: 158866

OMIM: 300576

UniProt: [Q96MV8](#)

Application Details

Application Notes: WB: 1:500~1:1000 ELISA: 1:10000

Comment: Unigene-Number: Hs.253211 (NCBI Gene Symbol: ZDHHC15)

Restrictions: For Research Use only

Handling

Format: Liquid

Concentration: 1 mg/mL

Buffer: phosphate buffered saline (without Mg²⁺ and Ca²⁺), pH 7.4, 150 mM NaCl, 0.02 % sodium azide and 50 % glycerol.

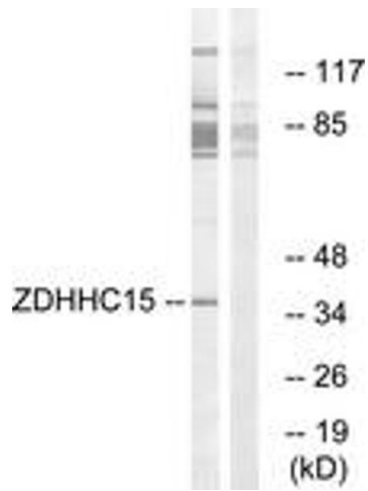
Preservative: Sodium azide

Precaution of Use: This product contains sodium azide: a POISONOUS AND HAZARDOUS SUBSTANCE which should be handled by trained staff only.

Storage: -20 °C

Storage Comment: Stable at -20°C for at least 1 year.

Expiry Date: 12 months



Western Blotting

Image 1. Western blot analysis of extracts from Jurkat cells, using ZDHHC15 Antibody. The lane on the right is treated with the synthesized peptide.