



[Go to Product page](#)

Datasheet for ABIN1535144
anti-PARD6B antibody (AA 233-282)

1 Image

Overview

Quantity:	100 µL
Target:	PARD6B
Binding Specificity:	AA 233-282
Reactivity:	Human, Mouse
Host:	Rabbit
Clonality:	Polyclonal
Conjugate:	This PARD6B antibody is un-conjugated
Application:	Western Blotting (WB), ELISA

Product Details

Immunogen:	The antiserum was produced against synthesized peptide derived from human PARD6B.
Isotype:	IgG
Specificity:	PARD6B Antibody detects endogenous levels of total PARD6B protein.
Purification:	The antibody was purified from rabbit antiserum by affinity-chromatography using immunogen.
Purity:	> 95 %

Target Details

Target:	PARD6B
Alternative Name:	PARD6B (PARD6B Products)
Background:	Synonyms: Partitioning defective 6 homolog beta, PAR-6 beta, PAR-6B

Target Details

NCBI Gene Symbol: PARD6B

Molecular Weight: 41 kDa

Gene ID: 84612

OMIM: 608975

UniProt: [Q9BYG5](#)

Pathways: [Cell-Cell Junction Organization](#)

Application Details

Application Notes: WB: 1:500~1:1000 ELISA: 1:5000

Comment: Unigene-Number: Hs.589848 (NCBI Gene Symbol: PARD6B)

Restrictions: For Research Use only

Handling

Format: Liquid

Concentration: 1 mg/mL

Buffer: phosphate buffered saline (without Mg²⁺ and Ca²⁺), pH 7.4, 150 mM NaCl, 0.02 % sodium azide and 50 % glycerol.

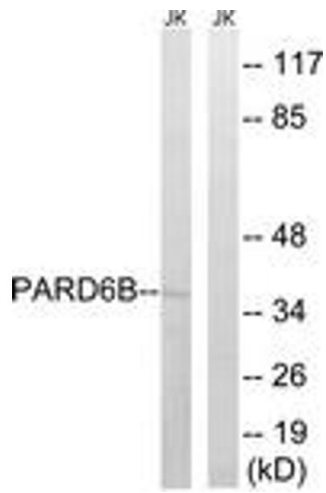
Preservative: Sodium azide

Precaution of Use: This product contains sodium azide: a POISONOUS AND HAZARDOUS SUBSTANCE which should be handled by trained staff only.

Storage: -20 °C

Storage Comment: Stable at -20°C for at least 1 year.

Expiry Date: 12 months



Western Blotting

Image 1. Western blot analysis of extracts from Jurkat cells, using PARD6B Antibody. The lane on the right is treated with the synthesized peptide.