

Datasheet for ABIN1535145  
**anti-DECR2 antibody (AA 217-266)**



[Go to Product page](#)

1 Image

## Overview

Quantity:	100 µL
Target:	DECR2
Binding Specificity:	AA 217-266
Reactivity:	Human, Mouse, Rat
Host:	Rabbit
Clonality:	Polyclonal
Conjugate:	This DECR2 antibody is un-conjugated
Application:	Western Blotting (WB), ELISA

## Product Details

Immunogen:	The antiserum was produced against synthesized peptide derived from human DECR2.
Isotype:	IgG
Specificity:	DECR2 Antibody detects endogenous levels of total DECR2 protein.
Purification:	The antibody was purified from rabbit antiserum by affinity-chromatography using immunogen.
Purity:	> 95 %

## Target Details

Target:	DECR2
Alternative Name:	DECR2 ( <a href="#">DECR2 Products</a> )
Background:	Synonyms: Peroxisomal 2,4-dienoyl-CoA reductase, 2,4-dienoyl-CoA reductase 2, pDCR,

Target Details

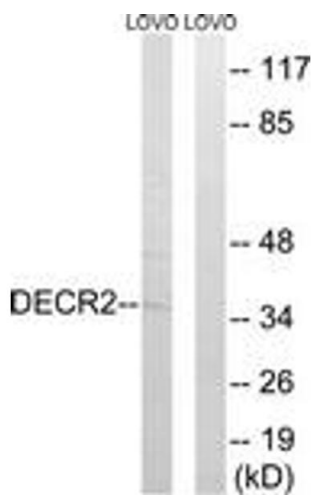
	NCBI Gene Symbol: DECR2
Molecular Weight:	30 kDa
Gene ID:	26063
UniProt:	<a href="#">Q9NUI1</a>

Application Details

Application Notes:	WB: 1:500~1:1000 ELISA: 1:10000
Comment:	Unigene-Number: Hs.628831 (NCBI Gene Symbol: DECR2)
Restrictions:	For Research Use only

Handling

Format:	Liquid
Concentration:	1 mg/mL
Buffer:	phosphate buffered saline (without Mg2+ and Ca2+), pH 7.4, 150 mM NaCl, 0.02 % sodium azide and 50 % glycerol.
Preservative:	Sodium azide
Precaution of Use:	This product contains sodium azide: a POISONOUS AND HAZARDOUS SUBSTANCE which should be handled by trained staff only.
Storage:	-20 °C
Storage Comment:	Stable at -20°C for at least 1 year.
Expiry Date:	12 months



Western Blotting

**Image 1.** Western blot analysis of extracts from LOVO cells, using DECR2 Antibody. The lane on the right is treated with the synthesized peptide.