

Datasheet for ABIN1535146  
**anti-PECI/ECI2 antibody (AA 73-122)**[Go to Product page](#)

## 2 Images

## Overview

Quantity:	100 µg
Target:	PECI/ECI2 (PECI)
Binding Specificity:	AA 73-122
Reactivity:	Human
Host:	Rabbit
Clonality:	Polyclonal
Conjugate:	This PECI/ECI2 antibody is un-conjugated
Application:	Western Blotting (WB), ELISA, Immunohistochemistry (IHC)

## Product Details

Immunogen:	The antiserum was produced against synthesized peptide derived from human PECI.
Isotype:	IgG
Specificity:	PECI Antibody detects endogenous levels of total PECI protein.
Purification:	The antibody was purified from rabbit antiserum by affinity-chromatography using immunogen.
Purity:	> 95 %

## Target Details

Target:	PECI/ECI2 (PECI)
Alternative Name:	PECI ( <a href="#">PECI Products</a> )
Background:	Synonyms: Peroxisomal 3,2-trans-enoyl-CoA isomerase, Dodecenoyl-CoA isomerase,

## Target Details

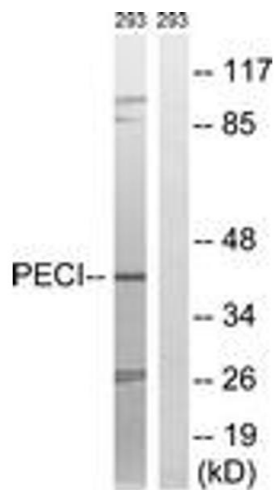
	Delta(3),delta(2)-enoyl-CoA isomerase, D3,D2-enoyl-CoA isomerase, DBI-related protein 1, DRS-1, Hepatocellular carcinoma-associated antigen 88, Renal carcinoma antigen NY-REN-1 NCBI Gene Symbol: PECL
Molecular Weight:	39 kDa
Gene ID:	10455
OMIM:	608024
UniProt:	<a href="#">075521</a>

## Application Details

Application Notes:	WB: 1:500~1:1000 IHC: 1:50~1:100 ELISA: 1:20000
Comment:	Unigene-Number: Hs.15250 (NCBI Gene Symbol: PECL)
Restrictions:	For Research Use only

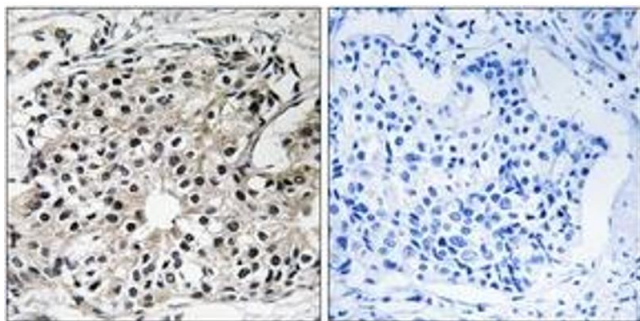
## Handling

Format:	Liquid
Concentration:	1 mg/mL
Buffer:	phosphate buffered saline (without Mg <sup>2+</sup> and Ca <sup>2+</sup> ), pH 7.4, 150 mM NaCl, 0.02 % sodium azide and 50 % glycerol.
Preservative:	Sodium azide
Precaution of Use:	This product contains sodium azide: a POISONOUS AND HAZARDOUS SUBSTANCE which should be handled by trained staff only.
Storage:	-20 °C
Storage Comment:	Stable at -20°C for at least 1 year.
Expiry Date:	12 months



#### Western Blotting

**Image 1.** Western blot analysis of extracts from 293 cells, using Peci Antibody. The lane on the right is treated with the synthesized peptide.



#### Immunohistochemistry

**Image 2.** Immunohistochemistry analysis of paraffin-embedded human breast carcinoma tissue, using Peci Antibody. The picture on the right is treated with the synthesized peptide.