

Datasheet for ABIN1535183
anti-PNPT1 antibody (AA 570-619)



[Go to Product page](#)

1 Image

Overview

Quantity:	100 µL
Target:	PNPT1
Binding Specificity:	AA 570-619
Reactivity:	Human, Mouse
Host:	Rabbit
Clonality:	Polyclonal
Application:	Immunohistochemistry (IHC), ELISA

Product Details

Immunogen:	The antiserum was produced against synthesized peptide derived from human PNPT1.
Isotype:	IgG
Specificity:	PNPT1 Antibody detects endogenous levels of total PNPT1 protein.
Purification:	The antibody was purified from rabbit antiserum by affinity-chromatography using immunogen.
Purity:	> 95 %

Target Details

Target:	PNPT1
Alternative Name:	PNPT1 (PNPT1 Products)
Background:	Synonyms: Polyribonucleotide nucleotidyltransferase 1 mitochondrial, 3'-5' RNA exonuclease OLD35, PNPase old-35, Polynucleotide phosphorylase 1, PNPase 1, Polynucleotide

Target Details

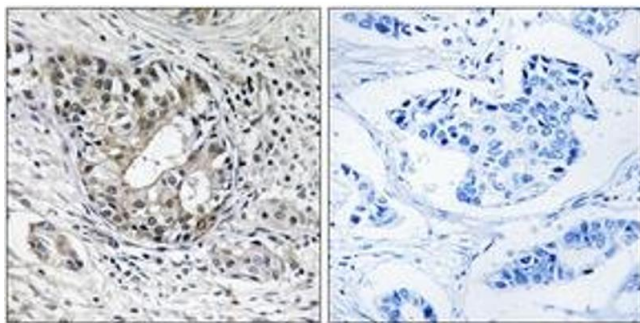
	phosphorylase-like protein , PNPT1 , PNPASE NCBI Gene Symbol: PNPT1
Molecular Weight:	85 kDa
Gene ID:	87178
OMIM:	610316
UniProt:	Q8TCS8

Application Details

Application Notes:	IHC: 1:50~1:100 ELISA: 1:20000
Comment:	Unigene-Number: Hs.388733 (NCBI Gene Symbol: PNPT1)
Restrictions:	For Research Use only

Handling

Format:	Liquid
Concentration:	1 mg/mL
Buffer:	phosphate buffered saline (without Mg ²⁺ and Ca ²⁺), pH 7.4, 150 mM NaCl, 0.02 % sodium azide and 50 % glycerol.
Preservative:	Sodium azide
Precaution of Use:	This product contains sodium azide: a POISONOUS AND HAZARDOUS SUBSTANCE which should be handled by trained staff only.
Storage:	-20 °C
Storage Comment:	Stable at -20°C for at least 1 year.
Expiry Date:	12 months



Immunohistochemistry

Image 1. Immunohistochemistry analysis of paraffin-embedded human breast carcinoma tissue, using PNPT1 Antibody. The picture on the right is treated with the synthesized peptide.