

Datasheet for ABIN1535189  
**anti-KCNA1 antibody (AA 256-305)**



[Go to Product page](#)

1 Image

## Overview

Quantity:	100 µL
Target:	KCNA1
Binding Specificity:	AA 256-305
Reactivity:	Human, Mouse, Rat
Host:	Rabbit
Clonality:	Polyclonal
Conjugate:	This KCNA1 antibody is un-conjugated
Application:	Western Blotting (WB), ELISA

## Product Details

Immunogen:	The antiserum was produced against synthesized peptide derived from human KCNA1.
Isotype:	IgG
Specificity:	KCNA1 Antibody detects endogenous levels of total KCNA1 protein.
Purification:	The antibody was purified from rabbit antiserum by affinity-chromatography using immunogen.
Purity:	> 95 %

## Target Details

Target:	KCNA1
Alternative Name:	KCNA1 ( <a href="#">KCNA1 Products</a> )
Background:	Synonyms: Potassium voltage-gated channel subfamily A member 1, Voltage-gated potassium

## Target Details

channel subunit Kv1.1, HUK1, HBK1  
NCBI Gene Symbol: KCNA1

Molecular Weight: 56 kDa

Gene ID: 3736

OMIM: 160120

UniProt: [Q09470](#)

## Application Details

Application Notes: WB: 1:500~1:1000 ELISA: 1:10000

Comment: Unigene-Number: Hs.416139 (NCBI Gene Symbol: KCNA1)

Restrictions: For Research Use only

## Handling

Format: Liquid

Concentration: 1 mg/mL

Buffer: phosphate buffered saline (without Mg<sup>2+</sup> and Ca<sup>2+</sup>), pH 7.4, 150 mM NaCl, 0.02 % sodium azide and 50 % glycerol.

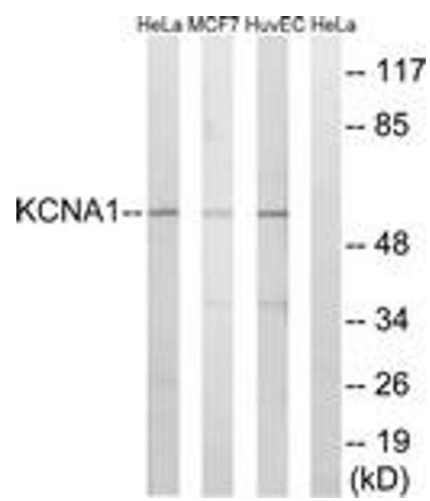
Preservative: Sodium azide

Precaution of Use: This product contains sodium azide: a POISONOUS AND HAZARDOUS SUBSTANCE which should be handled by trained staff only.

Storage: -20 °C

Storage Comment: Stable at -20°C for at least 1 year.

Expiry Date: 12 months



Western Blotting

**Image 1.** Western blot analysis of extracts from HuvEc/MCF-7/HeLa cells, using KCNA1 Antibody. The lane on the right is treated with the synthesized peptide.