

Datasheet for ABIN1535190
anti-KCND1 antibody (AA 558-607)



[Go to Product page](#)

1 Image

Overview

Quantity:	100 µL
Target:	KCND1 (Kcnd1)
Binding Specificity:	AA 558-607
Reactivity:	Human, Mouse
Host:	Rabbit
Clonality:	Polyclonal
Conjugate:	This KCND1 antibody is un-conjugated
Application:	Western Blotting (WB), ELISA

Product Details

Immunogen:	The antiserum was produced against synthesized peptide derived from human KCND1.
Isotype:	IgG
Specificity:	KCND1 Antibody detects endogenous levels of total KCND1 protein.
Purification:	The antibody was purified from rabbit antiserum by affinity-chromatography using immunogen.
Purity:	> 95 %

Target Details

Target:	KCND1 (Kcnd1)
Alternative Name:	KCND1 (Kcnd1 Products)
Background:	Synonyms: Potassium voltage-gated channel subfamily D member 1, Voltage-gated potassium

Target Details

channel subunit Kv4.1
NCBI Gene Symbol: KCND1

Molecular Weight: 71 kDa

Gene ID: 3750

OMIM: 300281

UniProt: [Q9NSA2](#)

Application Details

Application Notes: WB: 1:500~1:1000 ELISA: 1:20000

Comment: Unigene-Number: Hs.55276 (NCBI Gene Symbol: KCND1)

Restrictions: For Research Use only

Handling

Format: Liquid

Concentration: 1 mg/mL

Buffer: phosphate buffered saline (without Mg²⁺ and Ca²⁺), pH 7.4, 150 mM NaCl, 0.02 % sodium azide and 50 % glycerol.

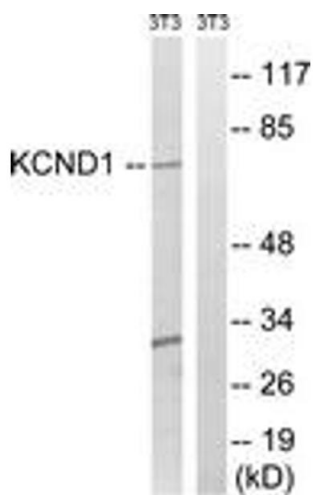
Preservative: Sodium azide

Precaution of Use: This product contains sodium azide: a POISONOUS AND HAZARDOUS SUBSTANCE which should be handled by trained staff only.

Storage: -20 °C

Storage Comment: Stable at -20°C for at least 1 year.

Expiry Date: 12 months



Western Blotting

Image 1. Western blot analysis of extracts from NIH-3T3 cells, using KCND1 Antibody. The lane on the right is treated with the synthesized peptide.