

Datasheet for ABIN1535192  
**anti-KCNG3 antibody (AA 183-232)**



[Go to Product page](#)

1 Image

## Overview

Quantity:	100 µL
Target:	KCNG3
Binding Specificity:	AA 183-232
Reactivity:	Human, Mouse, Rat
Host:	Rabbit
Clonality:	Polyclonal
Conjugate:	This KCNG3 antibody is un-conjugated
Application:	ELISA, Western Blotting (WB)

## Product Details

Immunogen:	The antiserum was produced against synthesized peptide derived from human KCNG3.
Isotype:	IgG
Specificity:	KCNG3 Antibody detects endogenous levels of total KCNG3 protein.
Purification:	The antibody was purified from rabbit antiserum by affinity-chromatography using immunogen.
Purity:	> 95 %

## Target Details

Target:	KCNG3
Alternative Name:	KCNG3 ( <a href="#">KCNG3 Products</a> )
Background:	Synonyms: Potassium voltage-gated channel subfamily G member 3, Voltage-gated potassium

## Target Details

channel subunit Kv6.3, Kv10.1  
NCBI Gene Symbol: KCNG3

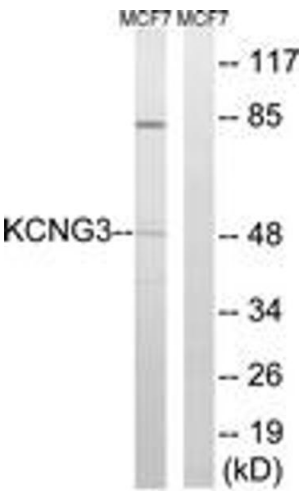
Molecular Weight: 49 kDa  
Gene ID: 170850  
OMIM: 606767  
UniProt: [Q8TAE7](#)

## Application Details

Application Notes: WB: 1:500~1:1000 ELISA: 1:1000  
Comment: Unigene-Number: Hs.352633 (NCBI Gene Symbol: KCNG3)  
Restrictions: For Research Use only

## Handling

Format: Liquid  
Concentration: 1 mg/mL  
Buffer: phosphate buffered saline (without Mg2+ and Ca2+), pH 7.4, 150 mM NaCl, 0.02 % sodium azide and 50 % glycerol.  
Preservative: Sodium azide  
Precaution of Use: This product contains sodium azide: a POISONOUS AND HAZARDOUS SUBSTANCE which should be handled by trained staff only.  
Storage: -20 °C  
Storage Comment: Stable at -20°C for at least 1 year.  
Expiry Date: 12 months



Western Blotting

**Image 1.** Western blot analysis of extracts from MCF-7 cells, using KCNG3 Antibody. The lane on the right is treated with the synthesized peptide.