



[Go to Product page](#)

Datasheet for ABIN1535213
anti-ENAH antibody (AA 472-521)

2 Images

Overview

Quantity:	100 µg
Target:	ENAH
Binding Specificity:	AA 472-521
Reactivity:	Human, Mouse, Rat
Host:	Rabbit
Clonality:	Polyclonal
Conjugate:	This ENAH antibody is un-conjugated
Application:	Western Blotting (WB), ELISA, Immunohistochemistry (IHC)

Product Details

Immunogen:	The antiserum was produced against synthesized peptide derived from human ENAH.
Isotype:	IgG
Specificity:	ENAH Antibody detects endogenous levels of total ENAH protein.
Purification:	The antibody was purified from rabbit antiserum by affinity-chromatography using immunogen.
Purity:	> 95 %

Target Details

Target:	ENAH
Alternative Name:	ENAH (ENAH Products)
Background:	Synonyms: Protein enabled homolog

Target Details

NCBI Gene Symbol: ENAH

Molecular Weight: 66 kDa

Gene ID: 55740

OMIM: 609061

UniProt: [Q8N8S7](#)

Application Details

Application Notes: WB: 1:500~1:1000 IHC: 1:50~1:100 ELISA: 1:10000

Comment: Unigene-Number: Hs.497893 (NCBI Gene Symbol: ENAH)

Restrictions: For Research Use only

Handling

Format: Liquid

Concentration: 1 mg/mL

Buffer: phosphate buffered saline (without Mg²⁺ and Ca²⁺), pH 7.4, 150 mM NaCl, 0.02 % sodium azide and 50 % glycerol.

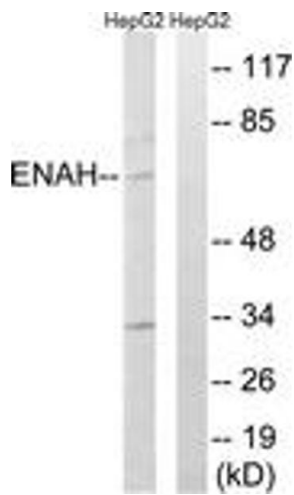
Preservative: Sodium azide

Precaution of Use: This product contains sodium azide: a POISONOUS AND HAZARDOUS SUBSTANCE which should be handled by trained staff only.

Storage: -20 °C

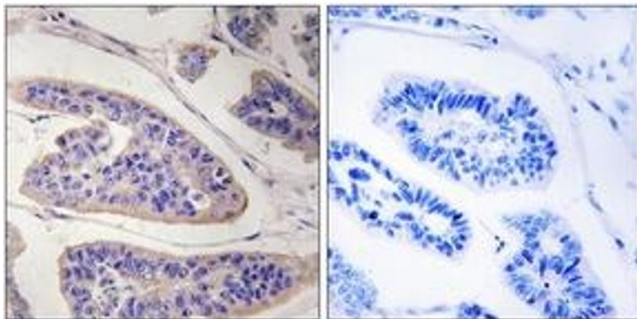
Storage Comment: Stable at -20°C for at least 1 year.

Expiry Date: 12 months



Western Blotting

Image 1. Western blot analysis of extracts from HepG2 cells, using ENAH Antibody. The lane on the right is treated with the synthesized peptide.



Immunohistochemistry

Image 2. Immunohistochemistry analysis of paraffin-embedded human breast carcinoma tissue, using ENAH Antibody. The picture on the right is treated with the synthesized peptide.