



[Go to Product page](#)

Datasheet for ABIN1535220
anti-PPP1R14D antibody (AA 66-115)

1 Image

Overview

| | |
|----------------------|---|
| Quantity: | 100 µg |
| Target: | PPP1R14D |
| Binding Specificity: | AA 66-115 |
| Reactivity: | Human |
| Host: | Rabbit |
| Clonality: | Polyclonal |
| Conjugate: | This PPP1R14D antibody is un-conjugated |
| Application: | Western Blotting (WB), ELISA |

Product Details

| | |
|---------------|---|
| Immunogen: | The antiserum was produced against synthesized peptide derived from human PPP1R14D. |
| Isotype: | IgG |
| Specificity: | PPP1R14D Antibody detects endogenous levels of total PPP1R14D protein. |
| Purification: | The antibody was purified from rabbit antiserum by affinity-chromatography using immunogen. |
| Purity: | > 95 % |

Target Details

| | |
|-------------------|--|
| Target: | PPP1R14D |
| Alternative Name: | PPP1R14D (PPP1R14D Products) |
| Background: | Synonyms: Gastrointestinal and brain-specific PP1-inhibitory protein 1, GBPI-1 |

Target Details

NCBI Gene Symbol: PPP1R14D

Molecular Weight: 16 kDa

Gene ID: 54866

OMIM: 613256

UniProt: [Q9NXH3](#)

Application Details

Application Notes: WB: 1:500~1:1000 ELISA: 1:10000

Comment: Unigene-Number: Hs.192927 (NCBI Gene Symbol: PPP1R14D)

Restrictions: For Research Use only

Handling

Format: Liquid

Concentration: 1 mg/mL

Buffer: phosphate buffered saline (without Mg²⁺ and Ca²⁺), pH 7.4, 150 mM NaCl, 0.02 % sodium azide and 50 % glycerol.

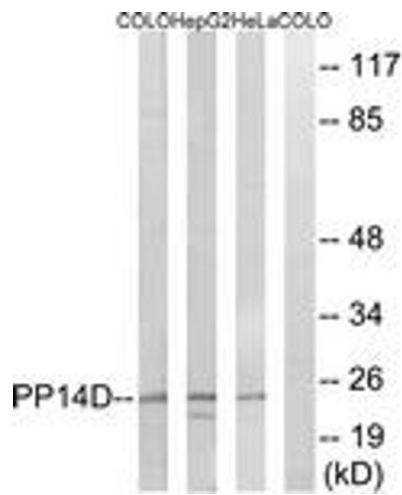
Preservative: Sodium azide

Precaution of Use: This product contains sodium azide: a POISONOUS AND HAZARDOUS SUBSTANCE which should be handled by trained staff only.

Storage: -20 °C

Storage Comment: Stable at -20°C for at least 1 year.

Expiry Date: 12 months



Western Blotting

Image 1. Western blot analysis of extracts from HeLa/HepG2/COLO cells, using PPP1R14D Antibody. The lane on the right is treated with the synthesized peptide.