

Datasheet for ABIN1535221

anti-PPP1R1C antibody (AA 5-54)[Go to Product page](#)**1** Image

Overview

Quantity:	100 µg
Target:	PPP1R1C
Binding Specificity:	AA 5-54
Reactivity:	Mouse, Human
Host:	Rabbit
Clonality:	Polyclonal
Conjugate:	This PPP1R1C antibody is un-conjugated
Application:	ELISA, Immunohistochemistry (IHC)

Product Details

Immunogen:	The antiserum was produced against synthesized peptide derived from human PPP1R1C.
Isotype:	IgG
Specificity:	PPP1R1C Antibody detects endogenous levels of total PPP1R1C protein.
Purification:	The antibody was purified from rabbit antiserum by affinity-chromatography using immunogen.
Purity:	> 95 %

Target Details

Target:	PPP1R1C
Alternative Name:	PPP1R1C (PPP1R1C Products)
Background:	Synonyms: Protein phosphatase 1 regulatory subunit 1C

Target Details

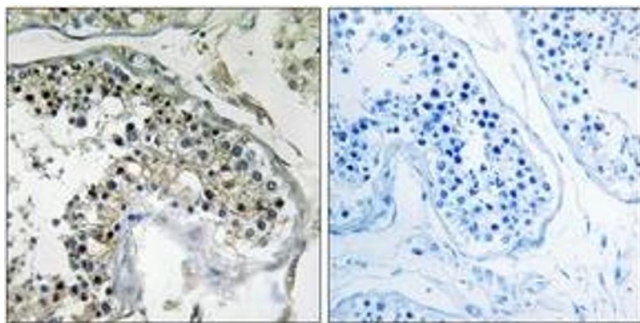
	NCBI Gene Symbol: PPP1R1C
Molecular Weight:	12 kDa
Gene ID:	151242
OMIM:	613240
UniProt:	Q8WV17

Application Details

Application Notes:	IHC: 1:50~1:100 ELISA: 1:10000
Comment:	Unigene-Number: Hs.10941 (NCBI Gene Symbol: PPP1R1C)
Restrictions:	For Research Use only

Handling

Format:	Liquid
Concentration:	1 mg/mL
Buffer:	phosphate buffered saline (without Mg ²⁺ and Ca ²⁺), pH 7.4, 150 mM NaCl, 0.02 % sodium azide and 50 % glycerol.
Preservative:	Sodium azide
Precaution of Use:	This product contains sodium azide: a POISONOUS AND HAZARDOUS SUBSTANCE which should be handled by trained staff only.
Storage:	-20 °C
Storage Comment:	Stable at -20°C for at least 1 year.
Expiry Date:	12 months



Immunohistochemistry

Image 1. Immunohistochemistry analysis of paraffin-embedded human testis tissue, using PPP1R1C Antibody. The picture on the right is treated with the synthesized peptide.