

Datasheet for ABIN1535223
anti-PPP1R3C antibody (AA 44-93)[Go to Product page](#)

1 Image

Overview

Quantity:	100 µg
Target:	PPP1R3C
Binding Specificity:	AA 44-93
Reactivity:	Human
Host:	Rabbit
Clonality:	Polyclonal
Application:	Western Blotting (WB), ELISA

Product Details

Immunogen:	The antiserum was produced against synthesized peptide derived from human PPP1R3C.
Isotype:	IgG
Specificity:	PPP1R3C Antibody detects endogenous levels of total PPP1R3C protein.
Purification:	The antibody was purified from rabbit antiserum by affinity-chromatography using immunogen.
Purity:	> 95 %

Target Details

Target:	PPP1R3C
Alternative Name:	PPP1R3C (PPP1R3C Products)
Background:	Synonyms: Protein phosphatase 1 regulatory subunit 5, R5, Protein targeting to glycogen, PTG NCBI Gene Symbol: PPP1R3C

Target Details

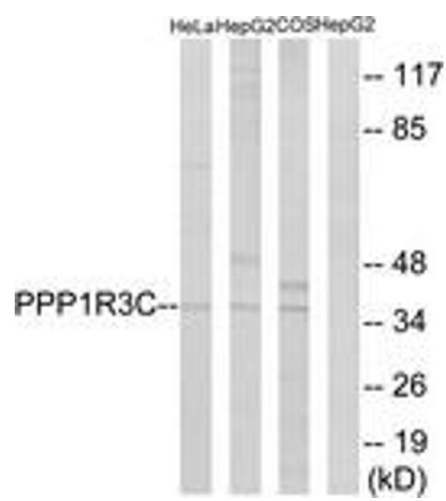
Molecular Weight:	36 kDa
Gene ID:	5507
OMIM:	602999
UniProt:	Q9UQK1
Pathways:	Cellular Glucan Metabolic Process , Regulation of Carbohydrate Metabolic Process

Application Details

Application Notes:	WB: 1:500~1:1000 ELISA: 1:20000
Comment:	Unigene-Number: Hs.303090 (NCBI Gene Symbol: PPP1R3C)
Restrictions:	For Research Use only

Handling

Format:	Liquid
Concentration:	1 mg/mL
Buffer:	phosphate buffered saline (without Mg ²⁺ and Ca ²⁺), pH 7.4, 150 mM NaCl, 0.02 % sodium azide and 50 % glycerol.
Preservative:	Sodium azide
Precaution of Use:	This product contains sodium azide: a POISONOUS AND HAZARDOUS SUBSTANCE which should be handled by trained staff only.
Storage:	-20 °C
Storage Comment:	Stable at -20°C for at least 1 year.
Expiry Date:	12 months



Western Blotting

Image 1. Western blot analysis of extracts from HepG2/HeLa/COS7 cells, using PPP1R3C Antibody. The lane on the right is treated with the synthesized peptide.