

Datasheet for ABIN1535227
anti-PMS2 antibody (AA 125-174)[Go to Product page](#)

1 Image

Overview

Quantity:	100 µg
Target:	PMS2
Binding Specificity:	AA 125-174
Reactivity:	Human
Host:	Rabbit
Clonality:	Polyclonal
Conjugate:	This PMS2 antibody is un-conjugated
Application:	ELISA, Immunohistochemistry (IHC)

Product Details

Immunogen:	The antiserum was produced against synthesized peptide derived from human PMS2CL.
Isotype:	IgG
Specificity:	PMS2/PMS2CL Antibody detects endogenous levels of total PMS2/PMS2CL protein.
Purification:	The antibody was purified from rabbit antiserum by affinity-chromatography using immunogen.
Purity:	> 95 %

Target Details

Target:	PMS2
Alternative Name:	PMS2/PMS2CL (PMS2 Products)
Background:	Synonyms: PMS2-C terminal-like protein, Protein PMS2CL

Target Details

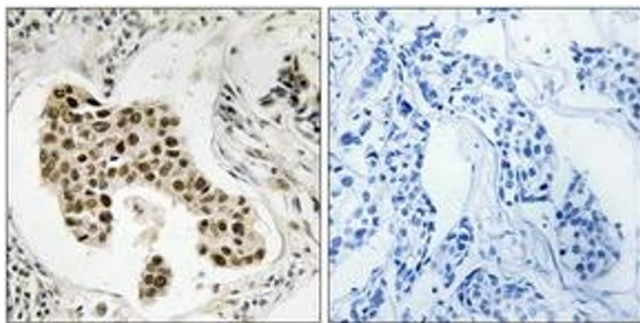
	NCBI Gene Symbol: PMS2CL
Molecular Weight:	20 kDa
Gene ID:	5395
OMIM:	276300
UniProt:	Q68D20 , P54278
Pathways:	DNA Damage Repair , Production of Molecular Mediator of Immune Response

Application Details

Application Notes:	IHC: 1:50~1:100 ELISA: 1:5000
Comment:	Unigene-Number: Hs.73105, Hs.632637 (NCBI Gene Symbol: PMS2CL)
Restrictions:	For Research Use only

Handling

Format:	Liquid
Concentration:	1 mg/mL
Buffer:	phosphate buffered saline (without Mg ²⁺ and Ca ²⁺), pH 7.4, 150 mM NaCl, 0.02 % sodium azide and 50 % glycerol.
Preservative:	Sodium azide
Precaution of Use:	This product contains sodium azide: a POISONOUS AND HAZARDOUS SUBSTANCE which should be handled by trained staff only.
Storage:	-20 °C
Storage Comment:	Stable at -20°C for at least 1 year.
Expiry Date:	12 months



Immunohistochemistry

Image 1. Immunohistochemistry analysis of paraffin-embedded human breast carcinoma, using PMS2/PMS2CL Antibody. The picture on the right is treated with the synthesized peptide.