

Datasheet for ABIN1535231
anti-S100A3 antibody (AA 26-75)[Go to Product page](#)

1 Image

Overview

Quantity:	100 µg
Target:	S100A3
Binding Specificity:	AA 26-75
Reactivity:	Human, Rat, Mouse
Host:	Rabbit
Clonality:	Polyclonal
Conjugate:	This S100A3 antibody is un-conjugated
Application:	Immunohistochemistry (IHC), ELISA

Product Details

Immunogen:	The antiserum was produced against synthesized peptide derived from human S100A3.
Isotype:	IgG
Specificity:	S100A3 Antibody detects endogenous levels of total S100A3 protein.
Purification:	The antibody was purified from rabbit antiserum by affinity-chromatography using immunogen.
Purity:	> 95 %

Target Details

Target:	S100A3
Alternative Name:	S100A3 (S100A3 Products)
Background:	Synonyms: S100 calcium-binding protein A3, Protein S-100E

Target Details

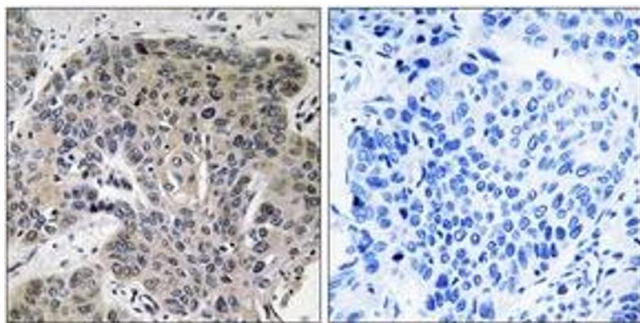
	NCBI Gene Symbol: S100A3
Molecular Weight:	11 kDa
Gene ID:	6274
OMIM:	176992
UniProt:	P33764
Pathways:	S100 Proteins

Application Details

Application Notes:	IHC: 1:50~1:100 ELISA: 1:40000
Comment:	Unigene-Number: Hs.557609 (NCBI Gene Symbol: S100A3)
Restrictions:	For Research Use only

Handling

Format:	Liquid
Concentration:	1 mg/mL
Buffer:	phosphate buffered saline (without Mg ²⁺ and Ca ²⁺), pH 7.4, 150 mM NaCl, 0.02 % sodium azide and 50 % glycerol.
Preservative:	Sodium azide
Precaution of Use:	This product contains sodium azide: a POISONOUS AND HAZARDOUS SUBSTANCE which should be handled by trained staff only.
Storage:	-20 °C
Storage Comment:	Stable at -20°C for at least 1 year.
Expiry Date:	12 months



Immunohistochemistry

Image 1. Immunohistochemistry analysis of paraffin-embedded human lung carcinoma tissue, using S100A3 Antibody. The picture on the right is treated with the synthesized peptide.