

Datasheet for ABIN1535238
anti-LUC7L2 antibody (AA 129-178)[Go to Product page](#)

1 Image

Overview

Quantity:	100 µg
Target:	LUC7L2
Binding Specificity:	AA 129-178
Reactivity:	Human, Mouse, Rat
Host:	Rabbit
Clonality:	Polyclonal
Conjugate:	This LUC7L2 antibody is un-conjugated
Application:	Immunohistochemistry (IHC), ELISA

Product Details

Immunogen:	The antiserum was produced against synthesized peptide derived from human LUC7L2.
Isotype:	IgG
Specificity:	LUC7L2 Antibody detects endogenous levels of total LUC7L2 protein.
Purification:	The antibody was purified from rabbit antiserum by affinity-chromatography using immunogen.
Purity:	> 95 %

Target Details

Target:	LUC7L2
Alternative Name:	LUC7L2 (LUC7L2 Products)
Background:	Synonyms: Putative RNA-binding protein Luc7-like 2, LUC7L2, CGI-59, CGI-74

Target Details

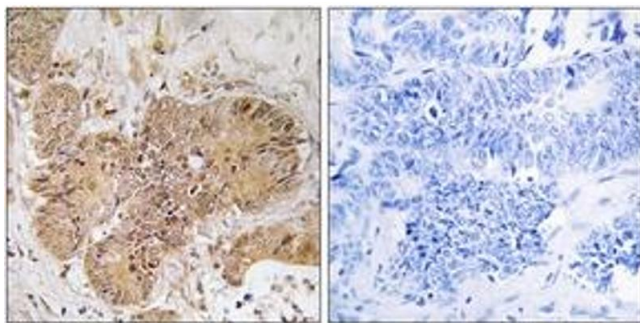
	NCBI Gene Symbol: LUC7L2
Molecular Weight:	46 kDa
Gene ID:	51631
OMIM:	613056
UniProt:	Q9Y383
Pathways:	Ribonucleoprotein Complex Subunit Organization

Application Details

Application Notes:	IHC: 1:50~1:100 ELISA: 1:40000
Comment:	Unigene-Number: Hs.723877 (NCBI Gene Symbol: LUC7L2)
Restrictions:	For Research Use only

Handling

Format:	Liquid
Concentration:	1 mg/mL
Buffer:	phosphate buffered saline (without Mg ²⁺ and Ca ²⁺), pH 7.4, 150 mM NaCl, 0.02 % sodium azide and 50 % glycerol.
Preservative:	Sodium azide
Precaution of Use:	This product contains sodium azide: a POISONOUS AND HAZARDOUS SUBSTANCE which should be handled by trained staff only.
Storage:	-20 °C
Storage Comment:	Stable at -20°C for at least 1 year.
Expiry Date:	12 months



Immunohistochemistry

Image 1. Immunohistochemistry analysis of paraffin-embedded human colon carcinoma tissue, using LUC7L2 Antibody. The picture on the right is treated with the synthesized peptide.