

Datasheet for ABIN1535245
anti-CHML antibody (AA 128-177)[Go to Product page](#)

2 Images

Overview

Quantity:	100 µg
Target:	CHML
Binding Specificity:	AA 128-177
Reactivity:	Human
Host:	Rabbit
Clonality:	Polyclonal
Conjugate:	This CHML antibody is un-conjugated
Application:	Western Blotting (WB), ELISA, Immunohistochemistry (IHC)

Product Details

Immunogen:	The antiserum was produced against synthesized peptide derived from human CHML.
Isotype:	IgG
Specificity:	CHML Antibody detects endogenous levels of total CHML protein.
Purification:	The antibody was purified from rabbit antiserum by affinity-chromatography using immunogen.
Purity:	> 95 %

Target Details

Target:	CHML
Alternative Name:	CHML (CHML Products)
Background:	Synonyms: Rab proteins geranylgeranyltransferase component A 2, Rab escort protein 2, REP-

Target Details

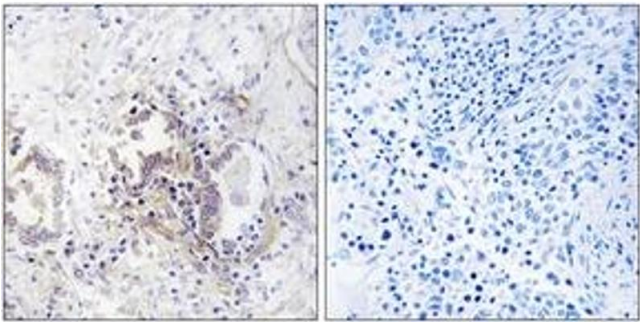
	2, Choroideraemia-like protein NCBI Gene Symbol: CHML
Molecular Weight:	74 kDa
Gene ID:	1122
OMIM:	118825
UniProt:	P26374

Application Details

Application Notes:	WB: 1:500~1:1000 IHC: 1:50~1:100 ELISA: 1:1000
Comment:	Unigene-Number: Hs.654545 (NCBI Gene Symbol: CHML)
Restrictions:	For Research Use only

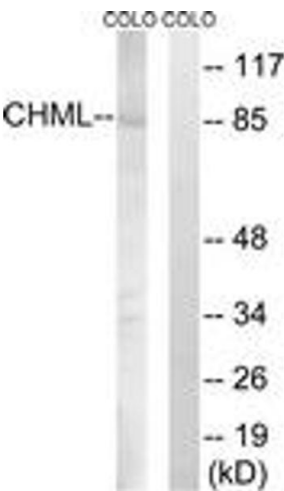
Handling

Format:	Liquid
Concentration:	1 mg/mL
Buffer:	phosphate buffered saline (without Mg ²⁺ and Ca ²⁺), pH 7.4, 150 mM NaCl, 0.02 % sodium azide and 50 % glycerol.
Preservative:	Sodium azide
Precaution of Use:	This product contains sodium azide: a POISONOUS AND HAZARDOUS SUBSTANCE which should be handled by trained staff only.
Storage:	-20 °C
Storage Comment:	Stable at -20°C for at least 1 year.
Expiry Date:	12 months



Immunohistochemistry

Image 1. Immunohistochemistry analysis of paraffin-embedded human lung carcinoma tissue, using CHML Antibody. The picture on the right is treated with the synthesized peptide.



Western Blotting

Image 2. Western blot analysis of extracts from COLO cells, using CHML Antibody. The lane on the right is treated with the synthesized peptide.