

Datasheet for ABIN1535255
anti-RSAD1 antibody (AA 298-347)[Go to Product page](#)

2 Images

Overview

Quantity:	100 µg
Target:	RSAD1
Binding Specificity:	AA 298-347
Reactivity:	Human, Mouse
Host:	Rabbit
Clonality:	Polyclonal
Conjugate:	This RSAD1 antibody is un-conjugated
Application:	Western Blotting (WB), Immunohistochemistry (IHC), ELISA

Product Details

Immunogen:	The antiserum was produced against synthesized peptide derived from human RSAD1.
Isotype:	IgG
Specificity:	RSAD1 Antibody detects endogenous levels of total RSAD1 protein.
Purification:	The antibody was purified from rabbit antiserum by affinity-chromatography using immunogen.
Purity:	> 95 %

Target Details

Target:	RSAD1
Alternative Name:	RSAD1 (RSAD1 Products)
Background:	Synonyms: Oxygen-independent coproporphyrinogen III oxidase-like protein RSAD1

Target Details

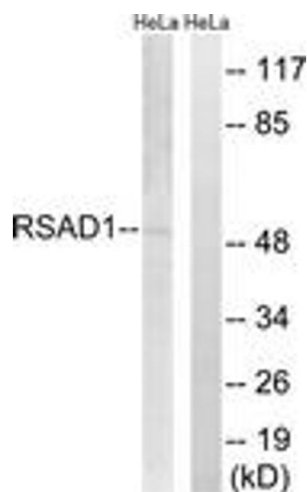
	NCBI Gene Symbol: RSAD1
Molecular Weight:	48 kDa
Gene ID:	55316
UniProt:	Q9HA92

Application Details

Application Notes:	WB: 1:500~1:1000 IHC: 1:50~1:100 ELISA: 1:1000
Comment:	Unigene-Number: Hs.8033 (NCBI Gene Symbol: RSAD1)
Restrictions:	For Research Use only

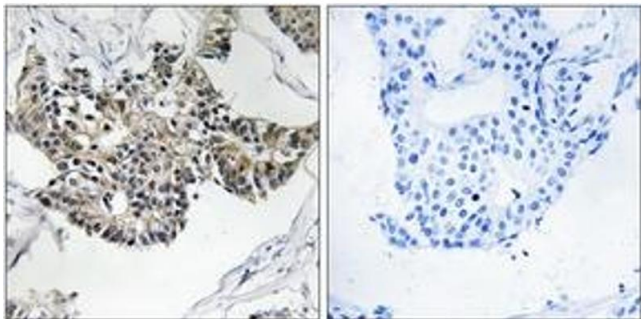
Handling

Format:	Liquid
Concentration:	1 mg/mL
Buffer:	phosphate buffered saline (without Mg ²⁺ and Ca ²⁺), pH 7.4, 150 mM NaCl, 0.02 % sodium azide and 50 % glycerol.
Preservative:	Sodium azide
Precaution of Use:	This product contains sodium azide: a POISONOUS AND HAZARDOUS SUBSTANCE which should be handled by trained staff only.
Storage:	-20 °C
Storage Comment:	Stable at -20°C for at least 1 year.
Expiry Date:	12 months



Western Blotting

Image 1. Western blot analysis of extracts from HeLa cells, using RSAD1 Antibody. The lane on the right is treated with the synthesized peptide.



Immunohistochemistry

Image 2. Immunohistochemistry analysis of paraffin-embedded human breast carcinoma tissue, using RSAD1 Antibody. The picture on the right is treated with the synthesized peptide.