

Datasheet for ABIN1535275
anti-RAB40B antibody (AA 229-278)[Go to Product page](#)

1 Image

Overview

Quantity:	100 µg
Target:	RAB40B
Binding Specificity:	AA 229-278
Reactivity:	Human
Host:	Rabbit
Clonality:	Polyclonal
Conjugate:	This RAB40B antibody is un-conjugated
Application:	ELISA, Western Blotting (WB)

Product Details

Immunogen:	The antiserum was produced against synthesized peptide derived from human RAB40B.
Isotype:	IgG
Specificity:	RAB40B Antibody detects endogenous levels of total RAB40B protein.
Purification:	The antibody was purified from rabbit antiserum by affinity-chromatography using immunogen.
Purity:	> 95 %

Target Details

Target:	RAB40B
Alternative Name:	RAB40B (RAB40B Products)
Background:	Synonyms: SOCS box-containing protein RAR, Rar protein

Target Details

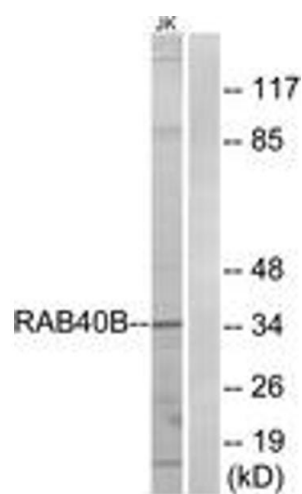
	NCBI Gene Symbol: RB40B
Molecular Weight:	30 kDa
Gene ID:	10966
UniProt:	Q12829

Application Details

Application Notes:	WB: 1:500~1:1000 ELISA: 1:40000
Comment:	Unigene-Number: Hs.484068 (NCBI Gene Symbol: RB40B)
Restrictions:	For Research Use only

Handling

Format:	Liquid
Concentration:	1 mg/mL
Buffer:	phosphate buffered saline (without Mg ²⁺ and Ca ²⁺), pH 7.4, 150 mM NaCl, 0.02 % sodium azide and 50 % glycerol.
Preservative:	Sodium azide
Precaution of Use:	This product contains sodium azide: a POISONOUS AND HAZARDOUS SUBSTANCE which should be handled by trained staff only.
Storage:	-20 °C
Storage Comment:	Stable at -20°C for at least 1 year.
Expiry Date:	12 months



Western Blotting

Image 1. Western blot analysis of extracts from Jurkat cells, using RAB40B Antibody. The lane on the right is treated with the synthesized peptide.